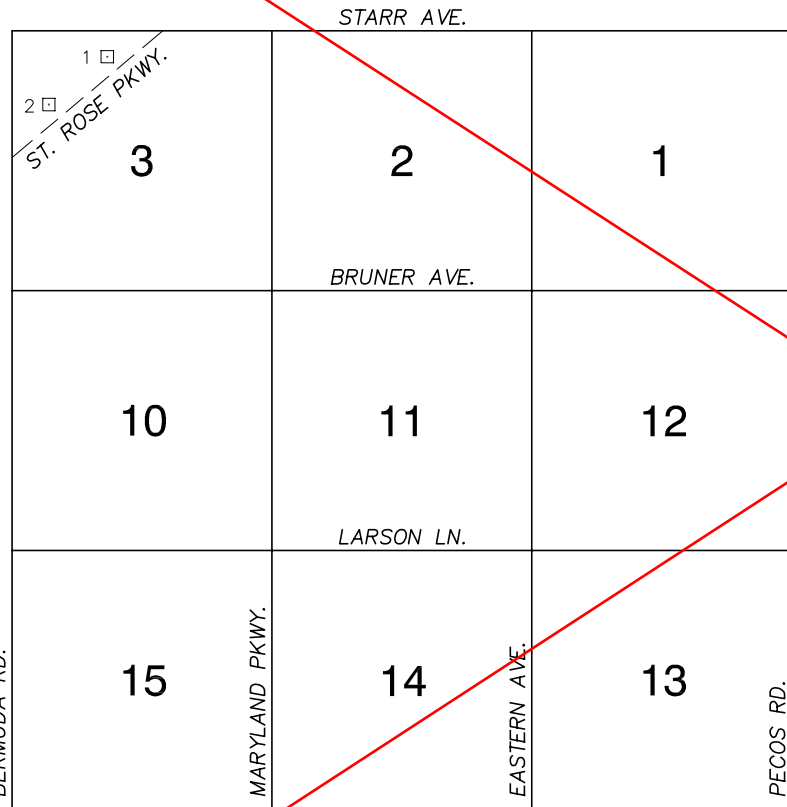


FOR REFERENCE ONLY

\*2018 BENCHMARK NETWORK ADJUSTMENT SUPERSEDES THE 2003 BENCHMARK BOOK

Township 23 South, Range 61 East  
Northeast Quarter



NORTH AMERICAN VERTICAL  
DATUM OF 1988  
- ALL ELEVATIONS IN METERS -

No.	STATION	ELEVATION (METERS)	DESCRIPTION
1	0C31 3N6	717.462	F N D RIVET AND SQUARE ALUMINUM PLATE IN A CONCRETE HEADWALL, NORTH SIDE OF ST. ROSE PKWY. 550' NORTHEASTERLY OF ENTRANCE TO HENDERSON EXECUTIVE AIRPORT, NEAR MILE MARKER 2.10.
2	0C31 3NW6	721.552	F N D RIVET AND SQUARE ALUMINUM PLATE IN A CONCRETE HEADWALL, NORTH SIDE OF ST. ROSE PKWY. NEAR MILE MARKER 1.75.
3			
4			
5			
6			
7			
8			
9			
10			
11			

CLARK COUNTY VERTICAL CONTROL v.2003

CLARK COUNTY SURVEYOR'S OFFICE  
5051 SOUTH PARADISE ROAD  
LAS VEGAS, NEVADA 89119  
(702) 455-0640

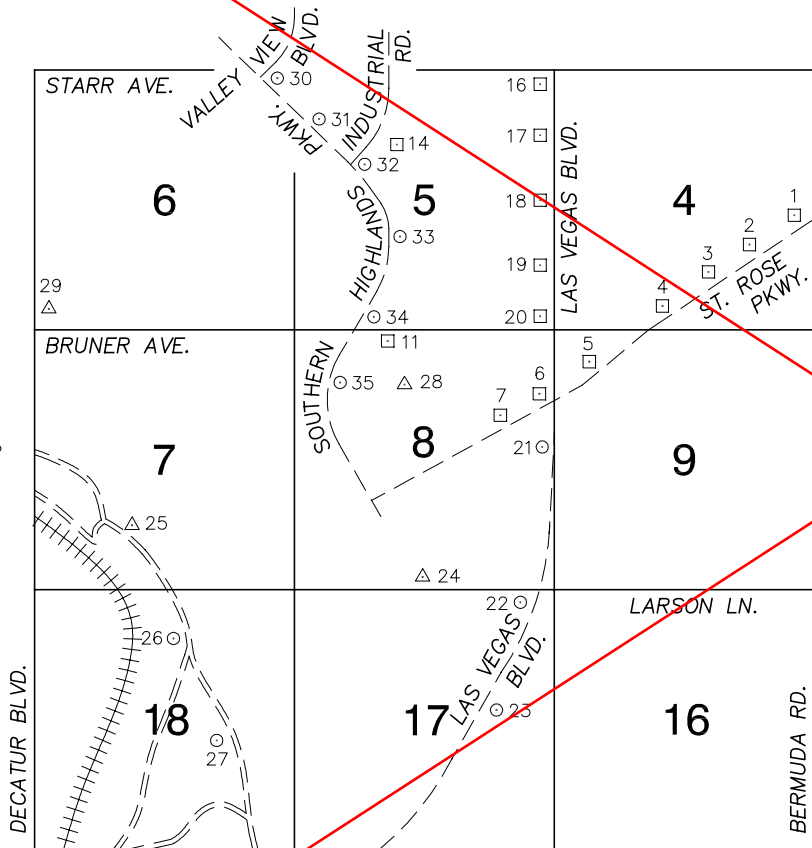
CONVERSION FACTOR:  
METERS X  $\left(\frac{3937}{1200}\right)$  = U.S. SURVEY FEET

REVISED 2003	SHEET 1 OF 1	23-61 NE
--------------	-----------------	-------------

FOR REFERENCE ONLY

\*2018 BENCHMARK NETWORK ADJUSTMENT SUPERSEDES THE 2003 BENCHMARK BOOK

**Township 23 South, Range 61 East  
Northwest Quarter**



NORTH AMERICAN VERTICAL  
DATUM OF 1988  
- ALL ELEVATIONS IN METERS -

No.	STATION	ELEVATION (METERS)		DESCRIPTION
1	0C31 4E4	724.316	F N D	NDOT CAP IN A CONCRETE MONUMENT, NORTH SIDE OF ST. ROSE PKWY. 250' WEST OF BERMUDA RD. NEAR MILE MARKER 1.50, STAMPED "68+78.21 POT 12/20/56".
2	0C31 4SE6	730.303	F N D	RIVET AND SQUARE ALUMINUM PLATE IN A CONCRETE HEADWALL, NORTH SIDE OF ST. ROSE PKWY. NEAR MILE MARKER 1.20.
3	0C31 4S6	735.313	F N D	NDOT CAP IN A CONCRETE MONUMENT, NORTH SIDE OF ST. ROSE PKWY. NEAR MILE MARKER 1.05 STAMPED "STA 43+87.33 POT 12/20/56"
4	0C31 4S4	739.767	F N D	RIVET AND SQUARE ALUMINUM PLATE IN THE WEST TOP OF A HEADWALL, NORTH SIDE OF ST. ROSE PKWY. NEAR MILE MARKER 0.85.
5	0C31 9NW6	749.204	F N D	NDOT CAP IN CONCRETE MONUMENT, NORTH SIDE OF ST. ROSE PKWY. NEAR MILE MARKER 0.45 AT THE HIGHWAY PC STAMPED "18+89.46 POT 11+29.27 PT 12-20-56"
6	0C31 8NEE6	755.518	F N D	RIVET AND SQUARE ALUMINUM PLATE IN THE WEST TOP OF A HEADWALL, NORTH SIDE OF ST. ROSE PKWY. 500' WEST OF LAS VEGAS BLVD.
7	0C31 8E6	756.536	F N D	NDOT CAP IN CONCRETE MONUMENT, NORTH SIDE OF ST. ROSE PKWY. NEAR THE PC FOR THE NORTHBOUND ON-RAMP FOR I-15 STAMPED "R4 5+00.00 PC"
8				LOST 2003
9				LOST 2003
10				LOST 2003
11	0C31 8N4	742.743	F N D	NDOT BRASS CAP HIGHWAY MARKER, ± 300 FEET EAST OF SOUTHERN HIGHLANDS PKWY. ALONG THE BRUNER AVE. ALIGNMENT. "NOT STAMPED"

**CLARK COUNTY VERTICAL CONTROL v.2003**

CLARK COUNTY SURVEYOR'S OFFICE  
5051 SOUTH PARADISE ROAD  
LAS VEGAS, NEVADA 89119  
(702) 455-0640

CONVERSION FACTOR:  
METERS X  $\left(\frac{3937}{1200}\right)$  = U.S. SURVEY FEET

REVISED  
08/01/2003

SHEET  
1 OF 2

**23-61**  
NW

FOR REFERENCE ONLY

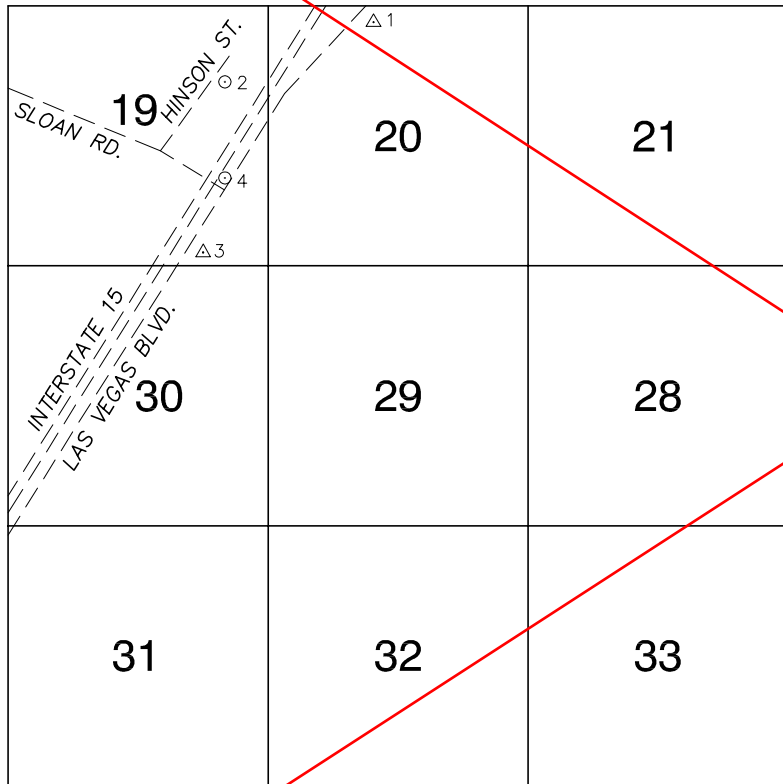
**\*2018 BENCHMARK NETWORK ADJUSTMENT SUPERSEDES THE 2003 BENCHMARK BOOK**

No.	STATION	ELEVATION (METERS)	DESCRIPTION	No.	STATION	ELEVATION (METERS)	DESCRIPTION
12			LOST 2003	25	J	829.097	FND USC&GS BRASS CAP ON A 4" IRON PIPE, 200' NORTH OF THE RAILROAD TRACKS STAMPED "U15"
13			LOST 2003	26	8C31 18N6 1998	826.680	SET RIVET AND ROUND ALUMINUM PLATE IN A CONCRETE MONUMENT, 21' WEST OF A JEEP TRAIL, 0.45 MILES NORTHWEST ALONG JEEP TRAIL FROM 8C31/18S6
14	0C31 5N6	724.306	FND INVERTED ALUMINUM MONUMENT, EAST SIDE OF INDUSTRIAL RD. 0.25 MILES NORTH OF BARBARA LN.	27	8C31 18SE6 1998	808.789	SET RIVET AND ROUND ALUMINUM PLATE IN A CONCRETE MONUMENT, 80' NORTH OF THE RUINS OF A STONE BUILDING, NEAR A JEEP TRAIL.
15			LOST 2003	28	E 146 1958	748.418	FND USC&GS BRASS CAP, 0.2 MILES EAST OF SOUTHERN HIGHLANDS PKWY. AND 200 FEET SOUTH OF ROBERT TRENT JONES LN.
16	4C31 5NES	720.390	FND RIVET AND SQUARE ALUMINUM PLATE IN A CONCRETE MONUMENT, SOUTHWEST QUADRANT OF LAS VEGAS BLVD. AND STARR AVE.	29	GIS 866	802.171	FND 2" BRASS CAP IN CONCRETE, ± 90 FEET NORTHEAST OF SECTION CORNER AT DECATUR AVE AND BRUNER AVE.
17	4C31 5NEE6	727.205	FND RIVET AND SQUARE ALUMINUM PLATE IN A CONCRETE MONUMENT, SOUTHWEST QUADRANT OF LAS VEGAS BLVD. AND NEAL AVE.	30	3C31 8NNE6 2003	714.971	SET RIVET AND ROUND ALUMINUM PLATE IN TOP OF CURB, SOUTHEAST CORNER OF SOUTHERN HIGHLANDS PKWY AND VALLEY VIEW BLVD, NEAR THE PC OF SOUTHERN HIGHLANDS PKWY.
18	4C31 5E4	734.635	FND RIVET AND SQUARE ALUMINUM PLATE IN A CONCRETE DRAIN HEADWALL ON THE WEST SIDE OF LAS VEGAS BLVD. 0.25 MILES NORTH OF DESERT PALM DR.	31	3C31 5NWW6 2003	720.405	SET RIVET AND ROUND ALUMINUM PLATE IN TOP OF CURB, EAST SIDE OF SOUTHERN HIGHLANDS PKWY ± 0.25 MILES NORTH OF THE INTERSECTION OF INDUSTRIAL RD AND SOUTHERN HIGHLANDS PKWY.
19	4C31 5SEE6	740.393	FND RIVET AND SQUARE ALUMINUM PLATE IN A CONCRETE ELEC. TRANSFORMER PAD, 200' WEST OF LAS VEGAS BLVD. ON THE SOUTH SIDE OF JONATHAN DR.	32	3C31 5W6 2003	727.570	SET RIVET AND ROUND ALUMINUM PLATE IN TOP OF CURB, SOUTHEAST CORNER OF SOUTHERN HIGHLANDS PKWY AND INDUSTRIAL RD, NEAR THE PC OF SOUTHERN HIGHLANDS PKWY.
20	4C31 5SES	746.311	FND RIVET AND SQUARE ALUMINUM PLATE IN A CONCRETE MONUMENT, NORTHWEST QUADRANT OF LAS VEGAS BLVD. AND BRUNER AVE.	33	3C31 5SW6 2003	733.757	SET RIVET AND ROUND ALUMINUM PLATE IN TOP OF CURB, EAST SIDE OF SOUTHERN HIGHLANDS PKWY ± 0.15 MILES NORTH OF THE INTERSECTION OF DANCING WINDS PLACE AND SOUTHERN HIGHLANDS PKWY.
21	8C31 8E4 1998	758.480	SET RIVET AND ROUND ALUMINUM PLATE IN A CONCRETE HEADWALL, WEST SIDE OF LAS VEGAS BLVD. 230' NORTH OF DALE AVE.	34	3C31 8NWW6 2003	739.197	SET RIVET AND ROUND ALUMINUM PLATE IN TOP OF CURB, EAST SIDE OF SOUTHERN HIGHLANDS PKWY ± 0.3 MILES NORTH OF THE INTERSECTION OF ROBERT TRENT JONES LN AND SOUTHERN HIGHLANDS PKWY.
22	8C31 17NES 1998	771.299	SET RIVET AND ROUND ALUMINUM PLATE IN A CONCRETE HEADWALL, WEST SIDE OF LAS VEGAS BLVD. SOUTH OF WESTERLY ALIGNMENT OF LARSON LN.	35	3C31 8NW6 2003	743.040	SET RIVET AND ROUND ALUMINUM PLATE IN TOP OF CURB, SOUTHEAST CORNER OF SOUTHERN HIGHLANDS PKWY AND ROBERT TRENT JONES LN NEAR THE PC OF SOUTHERN HIGHLANDS PKWY.
23	8C31 17E6 1998	785.306	SET RIVET AND ROUND ALUMINUM PLATE IN A CONCRETE MONUMENT, SOUTHEAST CORNER OF LAS VEGAS BLVD. AND ROBAN ST.	<b>CLARK COUNTY VERTICAL CONTROL v.2003</b>			
24	GAP OFFSET 1958	786.157	FND USC&GS BRASS CAP SET IN ROCK 0.62 MILES SOUTH OF THE INTERSECTION OF ST. ROSE PRKWY. (S.R. 146) AND I-15 OVERPASS, 0.12 MILES EAST OF I-15 AT TOP OF APPROX. 100' TALL ROCK OUTCROPPING.	CLARK COUNTY SURVEYOR'S OFFICE 5051 SOUTH PARADISE ROAD LAS VEGAS, NEVADA 89119 (702) 455-0640			CONVERSION FACTOR: METERS X $\left(\frac{3937}{1200}\right)$ = U.S. SURVEY FEET
				<b>REVISED</b>		<b>SHEET</b>	<b>23-61</b>
				<b>09/01/2006</b>		<b>2 OF 2</b>	<b>NW</b>

FOR REFERENCE ONLY

\*2018 BENCHMARK NETWORK ADJUSTMENT SUPERSEDES THE 2003 BENCHMARK BOOK

**Township 23 South, Range 61 East  
Southwest Quarter**



NORTH AMERICAN VERTICAL  
DATUM OF 1988  
- ALL ELEVATIONS IN METERS -

No.	STATION	ELEVATION (METERS)	DESCRIPTION
1	SLOAN 1958	809.441	F N D USC&GS BRASS CAP IN BEDROCK, EAST SIDE OF LAS VEGAS BLVD. SOUTH ON A HIGH KNOLL, 0.6 MILES SOUTH OF ROBAN ST. STAMPED SLOAN 1958
2	8C31 19NE6 1998	815.222	S E T RIVET AND ROUND ALUMINUM PLATE IN A CONCRETE MONUMENT, NORTH ALONG HINSON ST. (DIRT ROAD) TO A POWER LINE. BENCH IS 2' WEST OF A POWER POLE 17' EAST OF THE EAST EDGE OF THE DIRT RD. 1700' NORTH OF SLOAN RD.
3	F 146 1958	831.537	F N D USC&GS BRASS CAP IN A 1' DIAMETER CONCRETE MONUMENT, ON THE EAST SIDE OF SR 604 1' EAST OF THE EAST E.O.
4	0C31 19SEE6 2000	821.644	S E T RIVET AND ROUND ALUMINUM PLATE IN A CONCRETE ELECTRICAL PAD, WEST SIDE OF SR 604, +/- 100 FEET SOUTH OF I-15 NORTHBOUND ON RAMP.
5			
6			
7			
8			
9			
10			
11			

**CLARK COUNTY VERTICAL CONTROL v.2003**

CLARK COUNTY SURVEYOR'S OFFICE 5051 SOUTH PARADISE ROAD LAS VEGAS, NEVADA 89119 (702) 455-0640	CONVERSION FACTOR: METERS X $\left(\frac{3937}{1200}\right)$ = U.S. SURVEY FEET	
	REVISED 2003	SHEET 1 OF 1

**23-61  
SW**