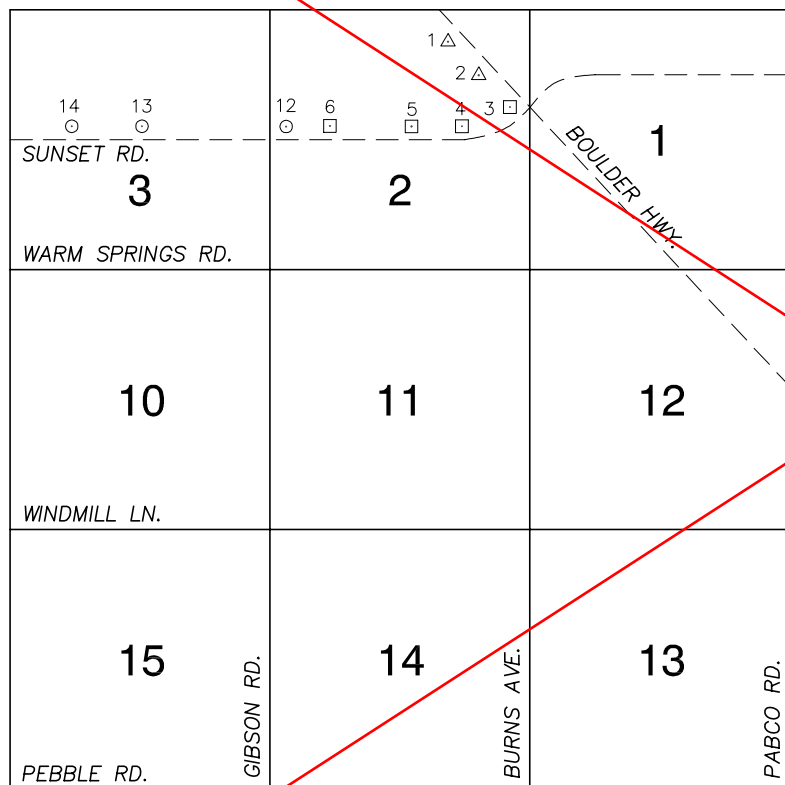


FOR REFERENCE ONLY
***2018 BENCHMARK NETWORK ADJUSTMENT SUPERSEDES THE 2003 BENCHMARK BOOK**

**Township 22 South, Range 62 East
 Northeast Quarter**



No.	STATION	ELEVATION (METERS)		DESCRIPTION
1	W 51 NO. 2 1947			USC&GS BRASS CAP, 160' WEST OF WEST E.O. OF BOULDER HWY. AND 80' NORTH OF THE CENTERLINE OF ELLIOTT RD. (AREA UNDER CONSTRUCTION, UNABLE TO LOCATE, POSSIBLY LOST.)
2	W 51 1934	504.851	F N D	USC&GS BRASS CAP, STAMPED W51 1934, 35' WEST OF WEST E.O. OF BOULDER HWY. AND 280' NORTH OF THE CENTERLINE OF ELLIOTT RD.
3	6C22 2E4	505.816	F N D	RIVET AND SQUARE ALUMINUM PLATE IN A CONCRETE CENTERLINE ISLAND, 4' WEST OF THE NOSE IN THE MIDDLE OF SUNSET RD. WEST SIDE OF INTERSECTION OF BOULDER HWY. AND SUNSET RD.
4	6C22 2E6	509.781	F N D	RIVET AND SQUARE ALUMINUM PLATE IN TOP OF CURB, NORTHEAST CORNER OF SUNSET RD. AND FOSTER AVE. THIS IS A POINT ON CURVE AND FOSTER AVE. IS NOT A THROUGH STREET.
5	6C22 2C4	511.381	F N D	RIVET AND SQUARE ALUMINUM PLATE IN TOP OF CURB, NORTHEAST CORNER OF SUNSET RD. AND ELLIOTT RD. NEAR THE PC OF SUNSET RD.
6	6C22 2W6	516.218	F N D	RIVET AND SQUARE ALUMINUM PLATE IN TOP OF CURB, NORTHEAST CORNER OF SUNSET RD. AND PARKSON RD.
7				LOST 2003
8				LOST 2003
9				LOST 2003
10				LOST 2003
11				LOST 2003

CLARK COUNTY VERTICAL CONTROL v.2003

NORTH AMERICAN VERTICAL
 DATUM OF 1988
 - ALL ELEVATIONS IN METERS -

CLARK COUNTY SURVEYOR'S OFFICE
 5051 SOUTH PARADISE ROAD
 LAS VEGAS, NEVADA 89119
 (702) 455-0640

CONVERSION FACTOR:
 METERS X $\left(\frac{3937}{1200}\right)$ = U.S. SURVEY FEET

REVISED 2003

SHEET
 1 OF 2

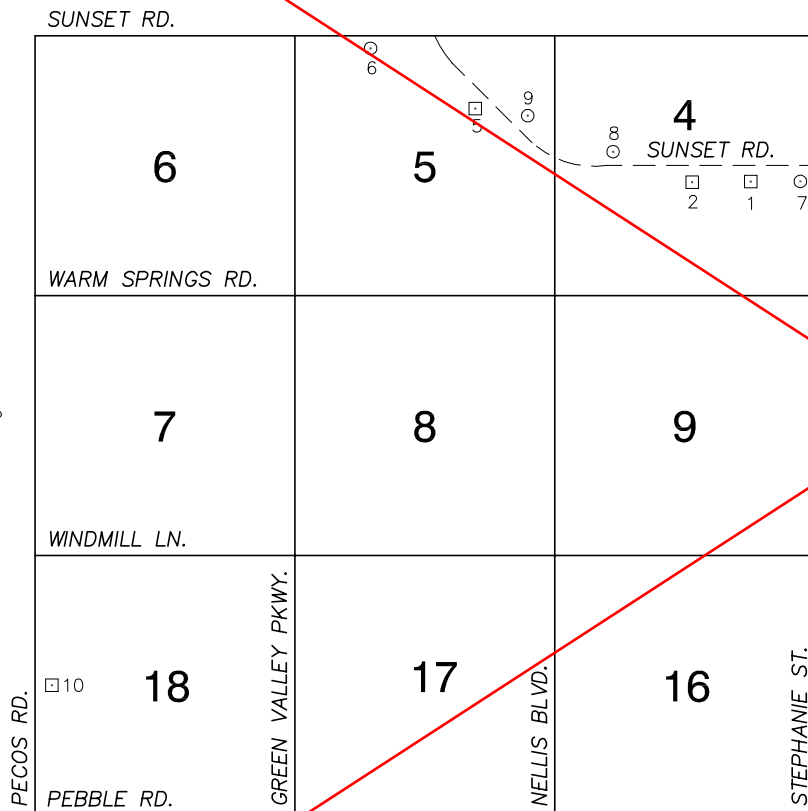
**22-62
 NE**

FOR REFERENCE ONLY
***2018 BENCHMARK NETWORK ADJUSTMENT SUPERSEDES THE 2003 BENCHMARK BOOK**

No.	STATION	ELEVATION (METERS)		DESCRIPTION	No.	STATION	ELEVATION (METERS)		DESCRIPTION
12	7C22 2W4 1997	520.423	S E T	RIVET AND ROUND ALUMINUM PLATE IN TOP OF CURB, NORTHEAST CORNER OF SUNSET RD. AND GIBSON RD. NEAR THE PC OF SUNSET RD.	25				
13	7C22 3C4 1997	529.460	S E T	RIVET AND ROUND ALUMINUM PLATE IN A CONCRETE HEADWALL, NORTH SIDE OF SUNSET RD. 420' WEST OF MARKS ST.	26				
14	7C22 3W6 1997	531.221	S E T	RIVET AND ROUND ALUMINUM PLATE IN TOP OF CURB, NORTH SIDE OF SUNSET RD. IN FRONT OF THE GALLERIA MALL, 300' EAST OF A BANK OF AMERICA BUILDING.	27				
15					28				
16					29				
17					30				
18					31				
19					32				
20					33				
21					34				
22					35				
23					CLARK COUNTY VERTICAL CONTROL v.2003				
24					CLARK COUNTY SURVEYOR'S OFFICE 5051 SOUTH PARADISE ROAD LAS VEGAS, NEVADA 89119 (702) 455-0640			CONVERSION FACTOR: METERS X $\left(\frac{3937}{1200}\right)$ = U.S. SURVEY FEET	
					REVISED 2003	SHEET 2 OF 2	22-62 NE		

FOR REFERENCE ONLY
***2018 BENCHMARK NETWORK ADJUSTMENT SUPERSEDES THE 2003 BENCHMARK BOOK**

**Township 22 South, Range 62 East
 Northwest Quarter**



NORTH AMERICAN VERTICAL
 DATUM OF 1988
 - ALL ELEVATIONS IN METERS -

No.	STATION	ELEVATION (METERS)		DESCRIPTION
1	6C22 4E6	533.553	F N D	RIVET AND SQUARE ALUMINUM PLATE IN TOP OF CURB, SOUTHEAST CORNER OF SUNSET RD. AND WHITNEY RANCH DR. NEAR THE PC OF SUNSET RD.
2	6C22 4C4	535.453	F N D	RIVET AND SQUARE ALUMINUM PLATE IN TOP OF CURB, SOUTH SIDE OF SUNSET RD. NEAR WEST PROPERTY LINE AT 1601 SUNSET RD.
3				LOST 2003
4				LOST 2003
5	6C22 5NE6	570.768	F N D	RIVET AND SQUARE ALUMINUM PLATE IN TOP OF CURB, SOUTHEAST CORNER OF SUNSET RD. AND VALLE VERDE DR. NEAR THE PC OF SUNSET RD.
6	7C22 5NNW6 1997	589.532	S E T	RIVET AND ROUND ALUMINUM PLATE IN TOP OF CURB, SOUTHWEST CORNER OF SUNSET RD. AND ATHENIAN WAY NEAR THE PC OF SUNSET RD. (4361 SUNSET RD.)
7	7C22 4E4 1997	532.131	S E T	RIVET AND ROUND ALUMINUM PLATE IN TOP OF CURB, NORTHWEST CORNER OF SUNSET RD. AND STEPHANIE ST. NEAR THE PC OF SUNSET RD.
8	7C22 4W6 1997	541.747	S E T	RIVET AND ROUND ALUMINUM PLATE IN A CONCRETE HEADWALL, NORTHWEST CORNER OF SUNSET RD. AND EIGER WAY.
9	7C22 5E4 1997	565.207	S E T	RIVET AND ROUND ALUMINUM PLATE IN TOP OF CURB, NORTHEAST CORNER OF SUNSET RD. AND SCIMITAR DR. SOUTHEASTERN MOST ENTRANCE TO RIDGEVIEW CONDOMINIUMS.
10	4C22 18W4	632.563	F N D	RIVET AND SQUARE ALUMINUM PLATE IN TOP OF CURB, SOUTHEAST CORNER OF WIGWAM AVE. AND PECOS RD. NEAR THE PC OF PECOS RD.
11				

CLARK COUNTY VERTICAL CONTROL v.2003

CLARK COUNTY SURVEYOR'S OFFICE
 5051 SOUTH PARADISE ROAD
 LAS VEGAS, NEVADA 89119
 (702) 455-0640

CONVERSION FACTOR:
 METERS X $\left(\frac{3937}{1200}\right)$ = U.S. SURVEY FEET

REVISED 2003

SHEET
 1 of 1

**22-62
 NW**