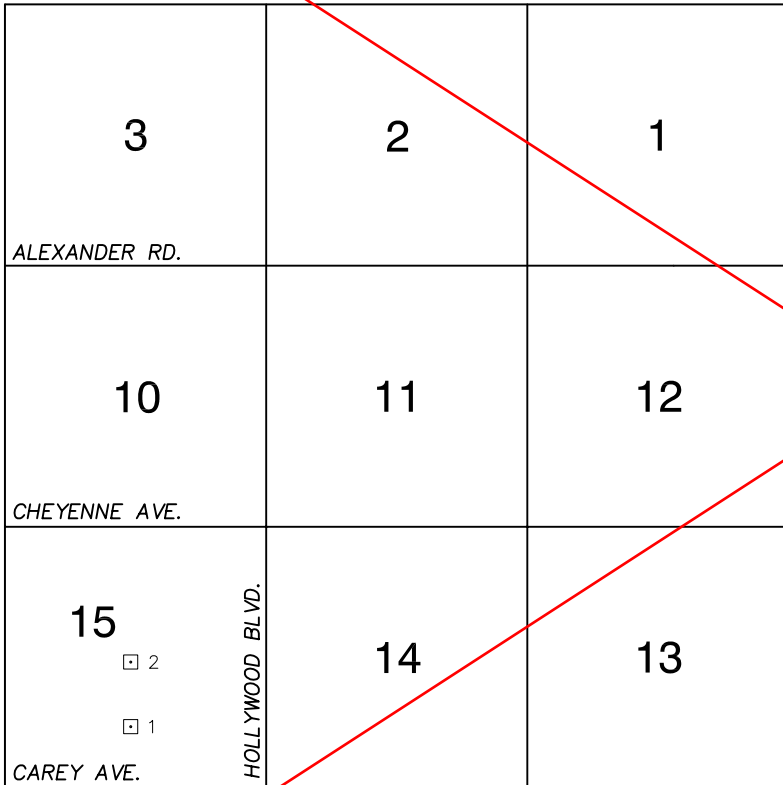


FOR REFERENCE ONLY

\*2018 BENCHMARK NETWORK ADJUSTMENT SUPERSEDES THE 2003 BENCHMARK BOOK

Township 20 South, Range 62 East  
Northeast Quarter

LONE MOUNTAIN RD.



ALEXANDER RD.

CHEYENNE AVE.

SLOAN LANE

HOLLYWOOD BLVD.

NORTH AMERICAN VERTICAL  
DATUM OF 1988  
- ALL ELEVATIONS IN METERS -

No.	STATION	ELEVATION (METERS)	DESCRIPTION
1	4C02 15S6	561.089	F N D RIVET AND SQUARE ALUMINUM PLATE IN TOP OF CURB NORTHEAST CORNER OF MOUNT HOOD ST. AND BLUEHURST AVE., NEAR THE PT OF MOUNT HOOD ST.
2	4C02 15C4	559.538	F N D RIVET AND SQUARE ALUMINUM PLATE IN TOP OF CURB SOUTHEAST CORNER OF MOUNT HOOD ST. AND ALTO DR. AT 1/2 DELTA.
3			
4			
5			
6			
7			
8			
9			
10			
11			

CLARK COUNTY VERTICAL CONTROL v.2003

CLARK COUNTY SURVEYOR'S OFFICE  
5051 SOUTH PARADISE ROAD  
LAS VEGAS, NEVADA 89119  
(702) 455-0640

CONVERSION FACTOR:  
METERS X  $\left(\frac{3937}{1200}\right)$  = U.S. SURVEY FEET

REVISED  
02/14/2005

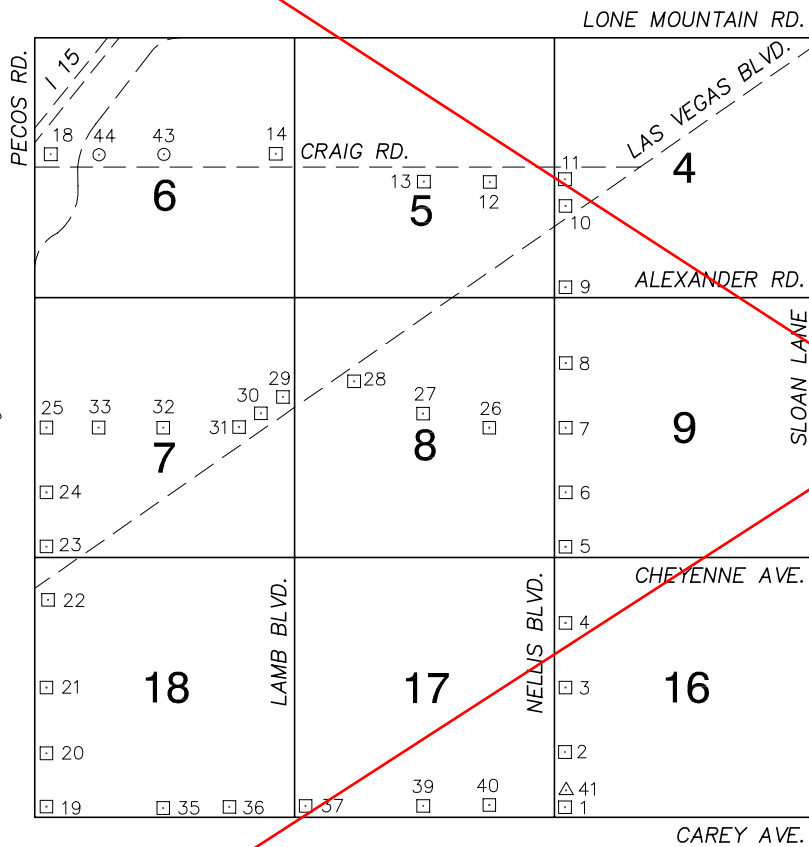
SHEET  
1 OF 1

20-62  
NE

FOR REFERENCE ONLY

\*2018 BENCHMARK NETWORK ADJUSTMENT SUPERSEDES THE 2003 BENCHMARK BOOK

Township 20 South, Range 62 East  
Northwest Quarter



NORTH AMERICAN VERTICAL  
DATUM OF 1988  
- ALL ELEVATIONS IN METERS -

No.	STATION	ELEVATION (METERS)	DESCRIPTION
1	6C02 16SWS	548.735	F N D 2" BRASS CAP REFERENCE MONUMENT IN TOP OF CURB NORTHEAST CORNER OF NELLIS BLVD. AND CAREY AVE. NEAR THE PC OF NELLIS BLVD.
2	6C02 16SWW6	550.652	F N D 2" BRASS CAP REFERENCE MONUMENT IN TOP OF CURB NORTHEAST CORNER OF NELLIS BLVD. AND CARTER AVE ALIGNMENT, AT 2584 NELLIS BLVD.
3	6C02 16W4	553.875	F N D 2" BRASS CAP REFERENCE MONUMENT IN TOP OF CURB NORTHEAST CORNER OF NELLIS BLVD. AND ALTO AVE. NEAR THE PC OF NELLIS BLVD.
4	6C02 16NWW6	557.089	F N D 2" BRASS CAP REFERENCE MONUMENT IN TOP OF CURB NORTHEAST CORNER OF NELLIS BLVD. AND CECILE AVE.
5	6C02 9SWS	557.498	F N D 2" BRASS CAP REFERENCE MONUMENT IN TOP OF CURB NORTHEAST CORNER OF NELLIS BLVD. AND CHEYENNE AVE. NEAR THE PC OF NELLIS BLVD.
6	6C02 9SWW6	559.248	F N D 2" BRASS CAP REFERENCE MONUMENT IN TOP OF CURB NORTHEAST CORNER RP FOR S 1/6, SEC 8/9, T.20S., R.62E.
7	6C02 9W4	560.907	F N D 2" BRASS CAP REFERENCE MONUMENT IN TOP OF CURB NORTHEAST CORNER OF NELLIS BLVD. AND GOWAN RD. ("1" ST.) NEAR 1/2 DELTA.
8	6C02 9NWW6	562.645	F N D 2" BRASS CAP REFERENCE MONUMENT IN TOP OF CURB NORTHEAST CORNER RP FOR N 1/16, SEC. 8/9 T.20S., R.62E.
9	6C02 4SWS	564.950	F N D 2" BRASS CAP REFERENCE MONUMENT IN TOP OF CURB NORTHEAST CORNER OF NELLIS BLVD. AND ALEXANDER RD.
10	6C02 4SWW6	567.886	F N D RIVET AND SQUARE ALUMINUM PLATE IN TOP OF CURB NORTHEAST CORNER OF NELLIS BLVD. AND LAS VEGAS BLVD. NEAR THE PC OF NELLIS BLVD.
11	6C02 4W4	570.251	F N D RIVET AND SQUARE ALUMINUM PLATE IN TOP OF CURB SOUTHEAST CORNER OF NELLIS BLVD. AND CRAIG RD. 30' SOUTH OF PC OF NELLIS BLVD.

CLARK COUNTY VERTICAL CONTROL v.2003

CLARK COUNTY SURVEYOR'S OFFICE  
5051 SOUTH PARADISE ROAD  
LAS VEGAS, NEVADA 89119  
(702) 455-0640

CONVERSION FACTOR:  
METERS X  $\left(\frac{3937}{1200}\right)$  = U.S. SURVEY FEET

REVISED 2003	SHEET 1 OF 3	20-62 NW
--------------	-----------------	-------------

**FOR REFERENCE ONLY**

**\*2018 BENCHMARK NETWORK ADJUSTMENT SUPERSEDES THE 2003 BENCHMARK BOOK**

No.	STATION	ELEVATION (METERS)	DESCRIPTION	No.	STATION	ELEVATION (METERS)	DESCRIPTION		
12	6C02 5E6	570.218	F N D RIVET AND SQUARE ALUMINUM PLATE IN TOP OF CURB OF A PLANTER CORNER, SOUTHEAST CORNER OF CRAIG RD. AND LAMONT ST. NEAR THE PC OF CRAIG RD.	25	7C02 7W4	570.920	F N D RIVET AND SQUARE ALUMINUM PLATE IN TOP OF CURB NORTHEAST CORNER OF PECOS RD. AND GOWAN RD. NEAR THE PC OF PECOS RD.		
13	6C02 5C4	570.781	F N D RIVET AND SQUARE ALUMINUM PLATE IN TOP OF CURB OF A PLANTER CORNER, SOUTHEAST CORNER OF CRAIG RD. AND PUEBLA ST. NEAR THE PC OF CRAIG RD.	26	7C02 8E6	561.692	F N D RIVET AND SQUARE ALUMINUM PLATE IN TOP OF CURB SOUTHWEST CORNER OF GOWAN RD, AND LAMONT ST. NEAR THE PC OF GOWAN RD.		
14	6C02 6E4	578.109	F N D RIVET AND SQUARE ALUMINUM PLATE IN TOP OF CURB IN THE NORTHWEST CORNER OF CRAIG RD. AND LAMB BLVD. NEAR THE PC OF CRAIG RD.	27	7C02 8C4	565.807	F N D RIVET AND SQUARE ALUMINUM PLATE IN TOP OF SOUTH END OF WEST CONCRETE WALL OF BOX CULVERT ON MARION DR. 225' NORTH OF GOWAN RD.		
15			LOST 2003	28	7C02 8NW6	566.832	F N D RIVET AND SQUARE ALUMINUM PLATE IN TOP OF SOUTHEAST WING WALL OF BOX CULVERT AT LAS VEGAS BLVD. 1200' SOUTHWEST OF PUEBLA ST.		
16			LOST 2003	29	7C02 8W4	568.406	F N D RIVET AND SQUARE ALUMINUM PLATE IN TOP OF CURB NORTHWEST CORNER OF LAS VEGAS BLVD. AND LAMB BLVD. NEAR THE PC OF LAS VEGAS BLVD.		
17			LOST 2003	30	7C02 7E4	571.024	F N D RIVET AND SQUARE ALUMINUM PLATE IN TOP OF CURB NORTH SIDE OF LAS VEGAS BLVD. 470' SOUTHWEST OF LAMB BLVD.		
18	6C02 6W4	582.799	F N D RIVET AND SQUARE ALUMINUM PLATE IN TOP OF CURB NORTHWEST CORNER OF CRAIG RD. AND PECOS RD. NEAR THE PC OF CRAIG RD.	31	7C02 7E6	574.153	F N D RIVET AND SQUARE ALUMINUM PLATE IN TOP OF CURB NORTHWEST CORNER OF GOWAN RD. AND LINCOLN RD. NEAR THE PC OF GOWAN RD.		
19	NLV 2 13 10	557.881	F N D BRASS CAP IN CONCRETE, JUST EAST OF SIDEWALK IN NORTHEAST CORNER OF PECOS RD. AND CAREY AVE. NEAR THE PC OF PECOS RD., STAMPED "NLV BM 2 13 10".	32	7C02 7C4	569.146	F N D RIVET AND SQUARE ALUMINUM PLATE IN TOP OF CURB IN THE NORTHEAST CORNER OF GOWAN RD. AND WALNUT RD. NEAR THE PC OF GOWAN RD.		
20	7C02 18SWW6	559.921	F N D RIVET AND SQUARE ALUMINUM PLATE IN TOP OF CURB NORTHEAST CORNER OF PECOS RD. AND CARTIER AVE. 30' NORTH OF CARTIER AVE.	33	7C02 7W6	569.365	F N D RIVET AND SQUARE ALUMINUM PLATE NORTHWEST CORNER OF GOWAN RD. AND SANDY LN. AT A METAL LIGHT POLE.		
21	7C02 18W4	562.258	F N D RIVET AND SQUARE ALUMINUM PLATE IN TOP OF CURB NORTHEAST CORNER OF PECOS RD. AND ALTO AVE. NEAR THE PC OF PECOS RD.	34			LOST 2003		
22	7C02 18NWW6	564.440	F N D RIVET AND SQUARE ALUMINUM PLATE IN TOP OF CURB SOUTHEAST CORNER OF PECOS RD. AND LAS VEGAS BLVD. NEAR THE PC OF PECOS RD.	35	3C02 18S4	556.030	F N D RIVET AND SQUARE ALUMINUM PLATE IN TOP OF CURB NORTHWEST CORNER OF CAREY AVE. AND WALNUT RD. NEAR THE PC OF CAREY AVE.		
23	7C02 7SWS	566.178	F N D RIVET AND SQUARE ALUMINUM PLATE IN TOP OF CURB NORTHEAST CORNER OF PECOS RD. AND CHEYENNE AVE. NEAR THE PC OF PECOS RD.	<b>CLARK COUNTY VERTICAL CONTROL v.2003</b>					
24	7C02 7SWW6	569.180	F N D RIVET AND SQUARE ALUMINUM PLATE IN TOP OF CURB NORTHEAST CORNER OF PECOS RD. AND COLTON AVE. NEAR THE PC OF PECOS RD.	CLARK COUNTY SURVEYOR'S OFFICE 5051 SOUTH PARADISE ROAD LAS VEGAS, NEVADA 89119 (702) 455-0640			CONVERSION FACTOR: METERS X $\left(\frac{3937}{1200}\right)$ = U.S. SURVEY FEET		
							REVISED 2003	SHEET 2 OF 3	<b>20-62 NW</b>

**FOR REFERENCE ONLY**

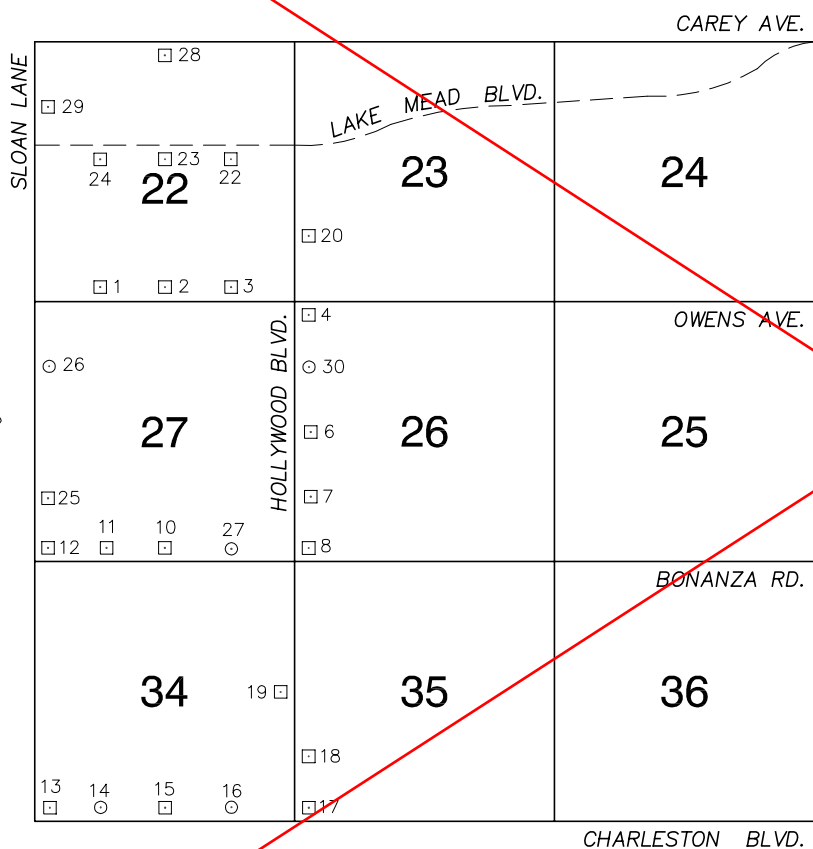
**\*2018 BENCHMARK NETWORK ADJUSTMENT SUPERSEDES THE 2003 BENCHMARK BOOK**

No.	STATION	ELEVATION (METERS)	DESCRIPTION	No.	STATION	ELEVATION (METERS)	DESCRIPTION
36	7C02 18SSE6	555.553	F N D RIVET AND SQUARE ALUMINUM PLATE IN TOP OF CURB NORTHEAST CORNER OF CAREY AVE. AND LINCOLN RD. NEAR THE PC OF CAREY.	49			
37	3C02 17SWS	553.967	F N D RIVET AND SQUARE ALUMINUM PLATE IN TOP OF CURB NORTHEAST CORNER OF CAREY AVE. AND LAMB BLVD. NEAR 1/2 DELTA.	50			
38			LOST 2003	51			
39	3C02 17S4	551.059	F N D RIVET AND SQUARE ALUMINUM PLATE IN TOP OF CURB NORTHWEST CORNER OF CAREY AVE. AND MARION DR. NEAR 1/2 DELTA.	52			
40	3C02 17SSE6	549.565	F N D RIVET AND SQUARE ALUMINUM PLATE IN TOP OF CURB NORTHWEST CORNER OF CAREY AVE. AND LAMONT ST. NEAR THE PC OF LAMONT ST.	53			
41	815 GIS	548.778	F N D CLARK COUNTY GIS BRASS CAP IN TOP OF CURB NORTHEAST CORNER OF NELLIS BLVD. AND CAREY AVE.	54			
42			LOST 2003	55			
43	7C02 6C4 1997	579.461	S E T RIVET AND ROUND ALUMINUM PLATE NORTHEAST CORNER OF CRAIG RD. AND WALNUT RD. NEAR THE PC OF CRAIG RD.	56			
44	7C02 6W6 1997	581.270	S E T RIVET AND ROUND ALUMINUM PLATE IN TOP OF CURB NORTH SIDE OF CRAIG RD. NEAR THE WEST PROPERTY LINE OF 3940 CRAIG RD. IN FRONT OF FIRE HYDRANT.	57			
45				58			
46				59			
47				<b>CLARK COUNTY VERTICAL CONTROL v.2003</b>			
48				CLARK COUNTY SURVEYOR'S OFFICE 5051 SOUTH PARADISE ROAD LAS VEGAS, NEVADA 89119 (702) 455-0640		CONVERSION FACTOR: METERS X $\left(\frac{3937}{1200}\right)$ = U.S. SURVEY FEET	
				REVISED 2003	SHEET 3 OF 3	<b>20-62 NW</b>	

FOR REFERENCE ONLY

\*2018 BENCHMARK NETWORK ADJUSTMENT SUPERSEDES THE 2003 BENCHMARK BOOK

Township 20 South, Range 62 East  
Southeast Quarter



NORTH AMERICAN VERTICAL  
DATUM OF 1988  
- ALL ELEVATIONS IN METERS -

No.	STATION	ELEVATION (METERS)	DESCRIPTION
1	7C02 22SSW6	549.029	F N D RIVET AND SQUARE ALUMINUM PLATE IN TOP OF CURB NORTHEAST CORNER OF OWENS AVE. AND BEESLEY DR. 26' EAST OF THE PC.
2	7C02 22S4	556.805	F N D RIVET AND SQUARE ALUMINUM PLATE IN TOP OF CURB NORTHEAST CORNER OF OWENS AVE. AND MT. HOOD ST. NEAR THE PC OF OWENS AVE.
3	7C02 22SSE6	566.287	F N D RIVET AND SQUARE ALUMINUM PLATE IN TOP OF CURB NORTHWEST CORNER OF OWENS AVE. AND SHATZ ST. NEAR THE PC OF OWENS AVE.
4	7C02 26NWS	578.763	F N D RIVET AND SQUARE ALUMINUM PLATE IN TOP OF CURB SOUTHEAST CORNER OF HOLLYWOOD BLVD. AND OWENS AVE. NEAR THE PC OF OWENS AVE.
5			LOST 2003
6	7C02 26W4	578.008	F N D RIVET AND SQUARE ALUMINUM PLATE IN TOP OF CURB SOUTHEAST CORNER OF HOLLYWOOD BLVD. AND WASHINGTON AVE. NEAR THE PC OF HOLLYWOOD BLVD.
7	7C02 26SWW6	573.483	F N D RIVET AND SQUARE ALUMINUM PLATE IN TOP OF CURB NORTHEAST CORNER OF HOLLYWOOD BLVD. AND SIDEHILL CT. NEAR THE PC OF HOLLYWOOD BLVD.
8	7C02 26SWS	566.998	F N D BRASS CAP REFERENCE MONUMENT, IN TOP OF CURB NORTHEAST CORNER OF HOLLYWOOD BLVD. AND BONANZA RD. NEAR THE PC OF HOLLYWOOD BLVD.
9			LOST 2003
10	7C02 27S4	546.221	F N D BRASS CAP REFERENCE MONUMENT IN TOP OF CURB NORTHEAST CORNER OF BONANZA RD. AND MT. HOOD ST. NEAR THE PC OF BONANZA RD.
11	7C02 27SSW6	539.262	F N D BRASS CAP REFERENCE MONUMENT IN TOP OF CURB NORTH SIDE OF BONANZA RD. AND 60' EAST OF THE CENTERLINE OF BEESLEY DR.

CLARK COUNTY VERTICAL CONTROL v.2003

CLARK COUNTY SURVEYOR'S OFFICE  
5051 SOUTH PARADISE ROAD  
LAS VEGAS, NEVADA 89119  
(702) 455-0640

CONVERSION FACTOR:  
METERS X  $\left(\frac{3937}{1200}\right)$  = U.S. SURVEY FEET

REVISED 2003

SHEET  
1 OF 2

20-62  
SE

**FOR REFERENCE ONLY**

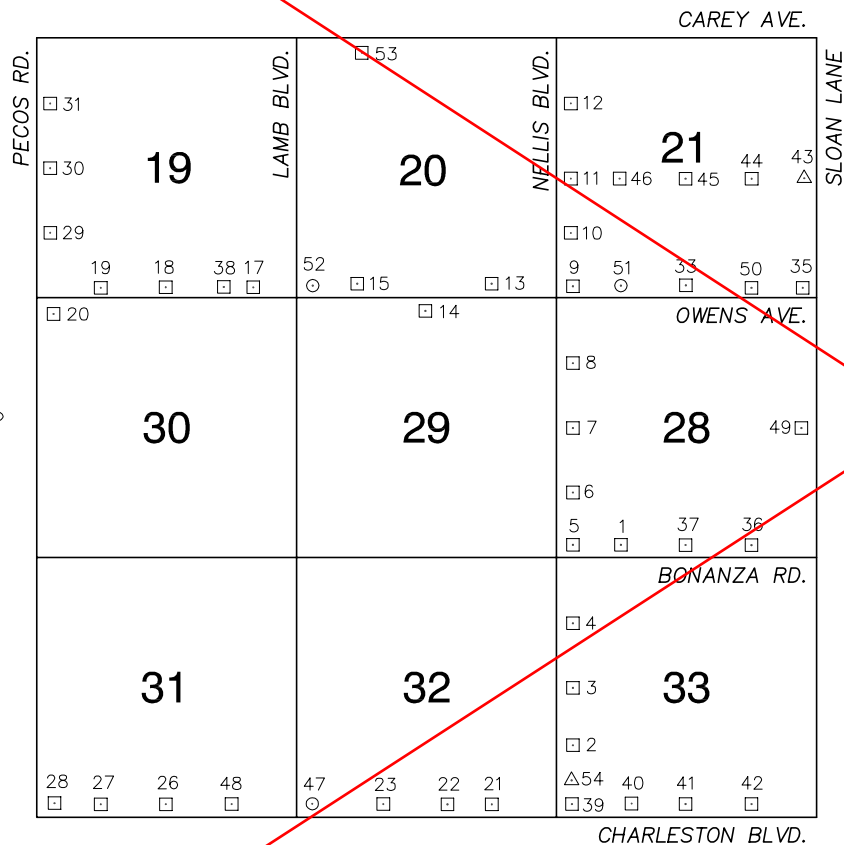
**\*2018 BENCHMARK NETWORK ADJUSTMENT SUPERSEDES THE 2003 BENCHMARK BOOK**

No.	STATION	ELEVATION (METERS)	DESCRIPTION	No.	STATION	ELEVATION (METERS)	DESCRIPTION
12	7C02 27SWS	535.942	F N D BRASS CAP REFERENCE MONUMENT IN TOP OF CURB NORTHEAST CORNER OF BONANZA RD. AND SLOAN LN. NEAR THE PC OF BONANZA RD.	25	4C02 27SWW6	537.934	F N D RIVET AND SQUARE ALUMINUM PLATE IN TOP OF CURB EAST SIDE OF SLOAN LN. 75' SOUTH OF HALEHAVEN DR.
13	3C02 34SWS	527.388	F N D RIVET AND SQUARE ALUMINUM PLATE IN TOP OF CURB NORTHEAST CORNER OF DROP INLET AT CHARLESTON BLVD. AND THE SLOAN CHANNEL.	26	0C02 27NWW6 2000	541.694	S E T RIVET AND ROUND ALUMINUM PLATE IN TOP OF CURB EAST SIDE OF SLOAN LN. 18' NORTH OF HONEYGROVE AVE.
14	7C02 34SSW6 1997	527.728	S E T RIVET AND ROUND ALUMINUM PLATE IN TOP OF CURB NORTHWEST CORNER OF CHARLESTON BLVD. AND BEESLEY ST. NEAR THE PC OF CHARLESTON BLVD.	27	0C02 27SSE6 2000	553.851	S E T RIVET AND ROUND ALUMINUM PLATE IN TOP OF CURB NORTHEAST CORNER OF BONANZA RD. AND SPANISH DR. NEAR THE PC OF BONANZA RD.
15	3C02 34S4	531.776	F N D RIVET AND SQUARE ALUMINUM PLATE IN TOP OF CURB NORTHEAST CORNER OF CHARLESTON BLVD. AND FOGG ST. NEAR THE PC OF CHARLESTON BLVD.	28	4C02 22N4	562.014	S E T RIVET AND SQUARE ALUMINUM PLATE IN TOP OF CURB SOUTHWEST CORNER OF CAREY AVE. AND MT. HOOD ST. NEAR THE PC OF CAREY AVE.
16	7C02 34SSE6 1997	538.821	S E T RIVET AND ROUND ALUMINUM PLATE IN TOP OF CURB NORTHEAST CORNER OF CHARLESTON BLVD. AND SPANISH DR. NEAR THE PC OF CHARLESTON BLVD.	29	4C02 22NWW6	547.595	F N D RIVET AND SQUARE ALUMINUM PLATE IN TOP OF CURB NORTHEAST CORNER OF JUDSON AVE. AND SLOAN LN. NEAR THE PC OF JUDSON AVE.
17	3C02 35SWS	548.834	F N D RIVET AND SQUARE ALUMINUM PLATE IN TOP OF CURB NORTHEAST CORNER OF CHARLESTON BLVD. AND HOLLYWOOD BLVD. NEAR THE PC OF HOLLYWOOD BLVD.	30	7C02 26NWW6	577.837	F N D RIVET AND ROUND ALUMINUM PLATE IN TOP OF CURB SOUTHEAST CORNER OF HOLLYWOOD BLVD. AND MONROE ST. NEAR FIRE HYDRANT.
18	3C02 35SWW6	552.007	F N D RIVET AND SQUARE ALUMINUM PLATE IN TOP OF CURB SOUTHEAST CORNER OF HOLLYWOOD BLVD. AND SUNRISE AVE. 12' SOUTH OF A CULVERT.	31			
19	3C02 34E4	555.493	F N D RIVET AND SQUARE ALUMINUM PLATE IN TOP OF CURB SOUTHWEST CORNER OF HOLLYWOOD BLVD. AND STEWART AVE. NEAR THE PC OF HOLLYWOOD BLVD.	32			
20	1C02 23SWW6	586.271	F N D RIVET AND SQUARE ALUMINUM PLATE IN TOP OF CURB NORTHEAST CORNER OF HOLLYWOOD BLVD. AND CHERRY GROVE AVE. NEAR THE PC OF HOLLYWOOD BLVD.	33			
21			LOST 2003	34			
22	4C02 22E6	572.338	F N D RIVET AND SQUARE ALUMINUM PLATE IN TOP OF CURB SOUTHWEST CORNER OF LAKE MEAD BLVD. AND SHATZ ST. NEAR THE PC OF LAKE MEAD BLVD.	35			
23	4C02 22C4	559.149	F N D RIVET AND SQUARE ALUMINUM PLATE IN TOP OF CURB SOUTHWEST CORNER OF LAKE MEAD BLVD. AND MT. HOOD ST. NEAR THE PC OF LAKE MEAD BLVD.	<b>CLARK COUNTY VERTICAL CONTROL v.2003</b>			
24	4C02 22W6	550.667	F N D RIVET AND SQUARE ALUMINUM PLATE IN TOP OF CURB SOUTHWEST CORNER OF LAKE MEAD BLVD. AND BEESLEY DR. NEAR THE PC OF LAKE MEAD BLVD.	CLARK COUNTY SURVEYOR'S OFFICE 5051 SOUTH PARADISE ROAD LAS VEGAS, NEVADA 89119 (702) 455-0640			CONVERSION FACTOR: METERS X $\left(\frac{3937}{1200}\right)$ = U.S. SURVEY FEET
			REVISED 09/01/2006		SHEET 2 OF 2		<b>20-62 SE</b>

FOR REFERENCE ONLY

\*2018 BENCHMARK NETWORK ADJUSTMENT SUPERSEDES THE 2003 BENCHMARK BOOK

Township 20 South, Range 62 East  
Southwest Quarter



NORTH AMERICAN VERTICAL  
DATUM OF 1988  
- ALL ELEVATIONS IN METERS -

No.	STATION	ELEVATION (METERS)	DESCRIPTION
1	7C02 28SSW6	535.486	F N D 2" BRASS CAP REFERENCE MONUMENT IN TOP OF CURB NORTHEAST CORNER OF BONANZA RD. AND BETTY LN. NEAR THE PC OF BONANZA RD.
2	6C02 33SWW6	531.848	F N D RIVET AND SQUARE ALUMINUM PLATE IN TOP OF CURB NORTHEAST CORNER OF NELLIS BLVD. AND BELPORT DR. NEAR THE PC OF NELLIS BLVD.
3	6C02 33W4	533.682	F N D 2" BRASS CAP REFERENCE MONUMENT IN TOP OF CURB NORTHEAST CORNER OF NELLIS BLVD. AND STEWART AVE. NEAR THE PC OF NELLIS BLVD.
4	6C02 33NWW6	535.017	F N D RIVET AND SQUARE ALUMINUM PLATE IN TOP OF CURB NORTHEAST CORNER OF NELLIS BLVD. AND CEDAR AVE. NEAR THE PC OF NELLIS BLVD.
5	6C02 28SWS	537.071	F N D 2" BRASS CAP REFERENCE MONUMENT IN TOP OF CURB NORTHEAST CORNER OF NELLIS BLVD. AND BONANZA ROAD, NEAR THE PC OF NELLIS BLVD.
6	6C02 28SWW6	537.628	F N D 2" BRASS CAP REFERENCE MONUMENT IN TOP OF CURB NORTHEAST CORNER OF NELLIS BLVD. AND HARRIS AVE. NEAR THE PC OF NELLIS BLVD.
7	6C02 28W4	538.942	F N D RIVET AND SQUARE ALUMINUM PLATE IN TOP OF CURB NORTHEAST CORNER OF NELLIS BLVD. AND WASHINGTON AVE. NEAR THE PC OF NELLIS BLVD.
8	6C02 28NWW6	540.396	F N D RIVET AND SQUARE ALUMINUM PLATE IN TOP OF CURB NORTHEAST CORNER OF NELLIS BLVD. AND MONROE AVE. NEAR THE PC OF NELLIS BLVD.
9	6C02 21SWS	542.038	F N D 2" BRASS CAP REFERENCE MONUMENT IN TOP OF CURB NORTHEAST CORNER OF NELLIS BLVD. AND OWENS AVE. NEAR THE PC OF NELLIS BLVD.
10	6C02 21SWW6	543.636	F N D RIVET AND SQUARE ALUMINUM PLATE IN TOP OF CURB NORTHEAST CORNER OF NELLIS BLVD. AND KELL LN. NEAR THE PC OF NELLIS BLVD.
11	6C02 21W4	545.159	F N D 2" BRASS CAP REFERENCE MONUMENT IN TOP OF CURB NORTHEAST CORNER OF NELLIS BLVD. AND LAKE MEAD BLVD. NEAR THE PC OF NELLIS BLVD.

CLARK COUNTY VERTICAL CONTROL v.2003

CLARK COUNTY SURVEYOR'S OFFICE  
5051 SOUTH PARADISE ROAD  
LAS VEGAS, NEVADA 89119  
(702) 455-0640

CONVERSION FACTOR:  
METERS X  $\left(\frac{3937}{1200}\right)$  = U.S. SURVEY FEET

REVISED 2003

SHEET  
1 OF 3

20-62  
SW

**FOR REFERENCE ONLY**

**\*2018 BENCHMARK NETWORK ADJUSTMENT SUPERSEDES THE 2003 BENCHMARK BOOK**

No.	STATION	ELEVATION (METERS)	DESCRIPTION	No.	STATION	ELEVATION (METERS)	DESCRIPTION
12	6C02 21NWW6	546.852	F N D 2" BRASS CAP REFERENCE MONUMENT IN TOP OF CURB NORTHEAST CORNER OF NELLIS BLVD. AND JUDSON AVE. NEAR THE PC OF NELLIS BLVD.	25			LOST 2000
13	7C02 20SSE6	542.812	F N D RIVET AND SQUARE ALUMINUM PLATE IN TOP OF CURB NORTHEAST CORNER OF OWENS AVE. AND LAMONT ST. NEAR THE PC OF OWENS AVE.	26	6C02 31S4	538.793	F N D RIVET AND SQUARE ALUMINUM PLATE IN TOP OF CURB AT CHARLESTON BLVD. & U.S. 93-95 ON-RAMP NORTH, NEAR THE PC OF CHARLESTON BLVD.
14	0C02 29N4	543.957	F N D RIVET AND SQUARE ALUMINUM PLATE IN TOP OF CURB SOUTHWEST CORNER OF OWENS AVE. AND MARION DR. NEAR THE PC OF OWENS AVE.	27	6C02 31SSW6	541.857	F N D RIVET AND SQUARE ALUMINUM PLATE IN TOP OF CURB NORTHEAST CORNER OF CHARLESTON BLVD. AND HONOLULU ST./SANDHILL RD. NEAR THE PC OF CHARLESTON BLVD.
15	0C02 20SSW6	545.032	F N D RIVET AND SQUARE ALUMINUM PLATE IN TOP OF CURB NORTH SIDE OF OWENS AVE., 0.25 MILES WEST OF MARION DR., 30' WEST OF THE EAST PROPERTY LINE OF THE LA JOLLA TRAILER PARK.	28	2LV01 36SSE6	550.460	F N D CITY OF LAS VEGAS PIN AND ALUMINUM PLATE IN TOP CURB, NORTHEAST CORNER OF CHARLESTON BLVD. AND PECOS ST. NEAR PC OF CHARLESTON BLVD. WAS KNOWN AS "6C02 31SWS" IN 1992 BENCH BOOK.
16			LOST 2003	29	7C02 19SWW6	554.726	F N D RIVET AND SQUARE ALUMINUM PLATE IN TOP OF CURB NORTHEAST CORNER OF PECOS RD. AND TONOPAH AVE. NEAR THE PC OF PECOS RD.
17	7C02 19SSE6	547.570	F N D RIVET AND SQUARE ALUMINUM PLATE IN TOP OF CURB ON THE NORTH SIDE OF OWENS AVE. AT THE NORTHWEST CORNER OF ROYAL ESTATES TRAILER PARK. BENCH IS ABOUT 0.25 MILES WEST OF LAMB BLVD.	30	7C02 19W4	556.491	F N D RIVET AND SQUARE ALUMINUM PLATE IN TOP OF CURB NORTHEAST CORNER OF PECOS RD. AND LAKE MEAD BLVD. NEAR THE PC OF PECOS RD.
18	0C02 19S4	549.580	F N D RIVET AND SQUARE ALUMINUM PLATE IN TOP OF CURB NORTHEAST CORNER OF OWENS AVE. AND WALNUT RD./SANDHILL RD. NEAR THE PC OF OWENS AVE.	31	7C02 19NWW6	556.985	F N D RIVET AND SQUARE ALUMINUM PLATE IN TOP OF CURB NORTHEAST CORNER OF PECOS RD. AND JUDSON AVE. 50' EAST OF CENTERLINE OF JUDSON AVE.
19	0C02 19SSW6	551.196	F N D RIVET AND SQUARE ALUMINUM PLATE IN TOP OF CURB NORTHEAST CORNER OF OWENS AVE. AND SANDY LN. NEAR THE PC OF OWENS AVE.	32			LOST 2003
20	7C02 30NWS	553.119	F N D RIVET AND SQUARE ALUMINUM PLATE IN TOP OF CURB SOUTHEAST CORNER OF OWENS AVE. AND PECOS RD. NEAR THE PC OF OWENS AVE.	33	7C02 21S4	541.049	F N D RIVET AND SQUARE ALUMINUM PLATE IN TOP OF CURB NORTHWEST CORNER OF OWENS AVE. AND CHRISTY LN. NEAR THE PC OF OWENS AVE.
21	6C02 32SSE6	531.416	F N D RIVET AND SQUARE ALUMINUM PLATE IN TOP OF CURB NORTHEAST CORNER OF CHARLESTON BLVD. AND YEW AVE. NEAR THE PC OF CHARLESTON BLVD.	34			LOST 2003
22	6C02 32S4	532.243	F N D RIVET AND SQUARE ALUMINUM PLATE IN TOP OF CURB NORTHEAST CORNER OF CHARLESTON BLVD. AND LUCERNE ST.	35	7C02 21SES	543.355	F N D RIVET AND SQUARE ALUMINUM PLATE IN TOP OF CURB AT THE SLOAN CHANNEL BRIDGE. NEAR SLOAN LN. AND OWENS AVE. ON THE NORTH SIDE OF OWENS AVE.
23	6C02 32SSW6	532.653	F N D RIVET AND SQUARE ALUMINUM PLATE IN TOP OF CURB ON THE NORTH SIDE OF CHARLESTON BLVD. 300' WEST OF MARION DR. IN FRONT OF 4550 CHARLESTON BLVD.	<b>CLARK COUNTY VERTICAL CONTROL v.2003</b>			
24			LOST 2003	CLARK COUNTY SURVEYOR'S OFFICE 5051 SOUTH PARADISE ROAD LAS VEGAS, NEVADA 89119 (702) 455-0640			CONVERSION FACTOR: METERS X $\left(\frac{3937}{1200}\right)$ = U.S. SURVEY FEET
				REVISED 2003		SHEET 2 OF 3	<b>20-62 SW</b>



**FOR REFERENCE ONLY**

**\*2018 BENCHMARK NETWORK ADJUSTMENT SUPERSEDES THE 2003 BENCHMARK BOOK**

No.	STATION	ELEVATION (METERS)	DESCRIPTION	No.	STATION	ELEVATION (METERS)	DESCRIPTION	
36	7C02 28SSE6	534.057	F N D 2" BRASS CAP REFERENCE MONUMENT IN TOP OF CURB IN THE NORTHEAST CORNER OF BONANZA RD. AND LINN LN. NEAR THE PC OF BONANZA RD.	49	4C02 28E4	541.016	F N D RIVET AND SQUARE ALUMINUM PLATE IN TOP OF WINGWALL, NORTHWEST CORNER OF SLOAN LN. AND WASHINGTON AVE.	
37	7C02 28S4	534.624	F N D 2" BRASS CAP REFERENCE MONUMENT IN TOP OF CURB IN THE NORTHEAST CORNER OF BONANZA RD. AND CHRISTY LN. NEAR THE PC OF BONANZA RD.	50	0C02 21SSE6 2000	541.313	S E T RIVET AND ROUND ALUMINUM PLATE IN TOP OF CURB, NORTHEAST CORNER OF OWENS AVE. AND LINN LN. NEAR THE PC OF OWENS AVE.	
38	0C02 19SSE6	548.758	F N D RIVET AND SQUARE ALUMINUM PLATE IN TOP OF CURB NORTHEAST CORNER OF OWENS AVE. AND GATEWAY RD. NEAR THE PC OF OWENS AVE.	51	0C02 21SSW6 2000	541.589	S E T RIVET AND ROUND ALUMINUM PLATE IN TOP OF CURB, NORTHEAST CORNER OF OWENS AVE. AND BETTY LN. NEAR THE PC OF OWENS AVE.	
39	3C02 33SWS	531.112	F N D RIVET AND SQUARE ALUMINUM PLATE IN THE SOUTHWEST CORNER OF TRAFFIC LIGHT POLE BASE, NORTHEAST CORNER OF NELLIS BLVD. AND CHARLESTON BLVD. NEAR THE PC OF NELLIS BLVD.	52	0LV02 20SWS	546.214	F N D CITY OF LAS VEGAS PIN AND PLATE IN TOP OF CURB, NORTHEAST CORNER OF LAMB BLVD. AND OWENS AVE. NEAR THE PC OF OWENS AVE, "NOT STAMPED".	
40	3C02 33SSW6	529.581	F N D RIVET AND SQUARE ALUMINUM PLATE IN TOP OF CURB NORTHEAST CORNER OF CHARLESTON BLVD. AND BETTY LANE, NEAR THE PC OF CHARLESTON BLVD.	53	7C02 20NNW6 1987	552.876	F N D RIVET AND SQUARE ALUMINUM PLATE IN TOP OF CURB. SOUTHWEST CORNER OF CAREY AVE. AND COLEBROOK ST. NEAR THE PC OF CAREY AVE.	
41	3C02 33S4	529.180	F N D RIVET AND SQUARE ALUMINUM PLATE IN TOP OF CURB NORTHEAST CORNER OF CHARLESTON BLVD. AND CHRISTY LANE, NEAR THE PC OF CHARLESTON BLVD.	54	827 GIS	531.002	F N D 2" BRASS CAP IN TOP OF CURB. NORTHEAST CORNER OF CHARLESTON BLVD. AND NELLIS BLVD. NEAR THE PC OF NELLIS BLVD.	
42	3C02 33SSE6	528.424	F N D RIVET AND SQUARE ALUMINUM PLATE IN TOP OF CURB NORTHEAST CORNER OF CHARLESTON BLVD. AND LINN LN. NEAR THE PC OF LINN LN.	55				
43	Q 368 1980	546.073	F N D NGS BRASS CAP IN TOP OF CURB NORTHWEST CORNER OF LAKE MEAD BLVD. AND SLOAN CHANNEL. STAMPED "Q368 RESET 1980".	56				
44	4C02 21E6	545.095	F N D RIVET AND SQUARE ALUMINUM PLATE IN TOP OF CURB SOUTHWEST CORNER OF LAKE MEAD BLVD. AND LINN LN. NEAR 2/3 DELTA OF LAKE MEAD BLVD.	57				
45	4C02 21C4	544.263	F N D RIVET AND SQUARE ALUMINUM PLATE IN TOP OF CURB SOUTHEAST CORNER OF LAKE MEAD BLVD. AND CHRISTY LN. NEAR THE PC OF LAKE MEAD BLVD.	58				
46	4C02 21W6	544.594	F N D RIVET AND SQUARE ALUMINUM PLATE IN TOP OF CURB NORTHEAST CORNER OF LAKE MEAD BLVD. AND BETTY LN. NEAR THE PC OF LAKE MEAD BLVD.	59				
47	2LV02 32SWS	534.458	F N D CITY OF LAS VEGAS PIN AND PLATE IN TOP OF CURB NORTHEAST CORNER OF CHARLESTON BLVD. AND LAMB BLVD. NEAR THE PC OF CHARLESTON BLVD.	<b>CLARK COUNTY VERTICAL CONTROL v.2003</b>				
48	2LV02 31SSE6	536.282	F N D CITY OF LAS VEGAS PIN AND PLATE IN TOP OF CURB NORTHEAST CORNER OF CHARLESTON BLVD. AND PRINCE LN. NEAR THE PC OF CHARLESTON BLVD.	CLARK COUNTY SURVEYOR'S OFFICE 5051 SOUTH PARADISE ROAD LAS VEGAS, NEVADA 89119 (702) 455-0640		CONVERSION FACTOR: METERS X $\left(\frac{3937}{1200}\right)$ = U.S. SURVEY FEET		
						REVISED 2003	SHEET 3 OF 3	<b>20-62</b> <b>SW</b>