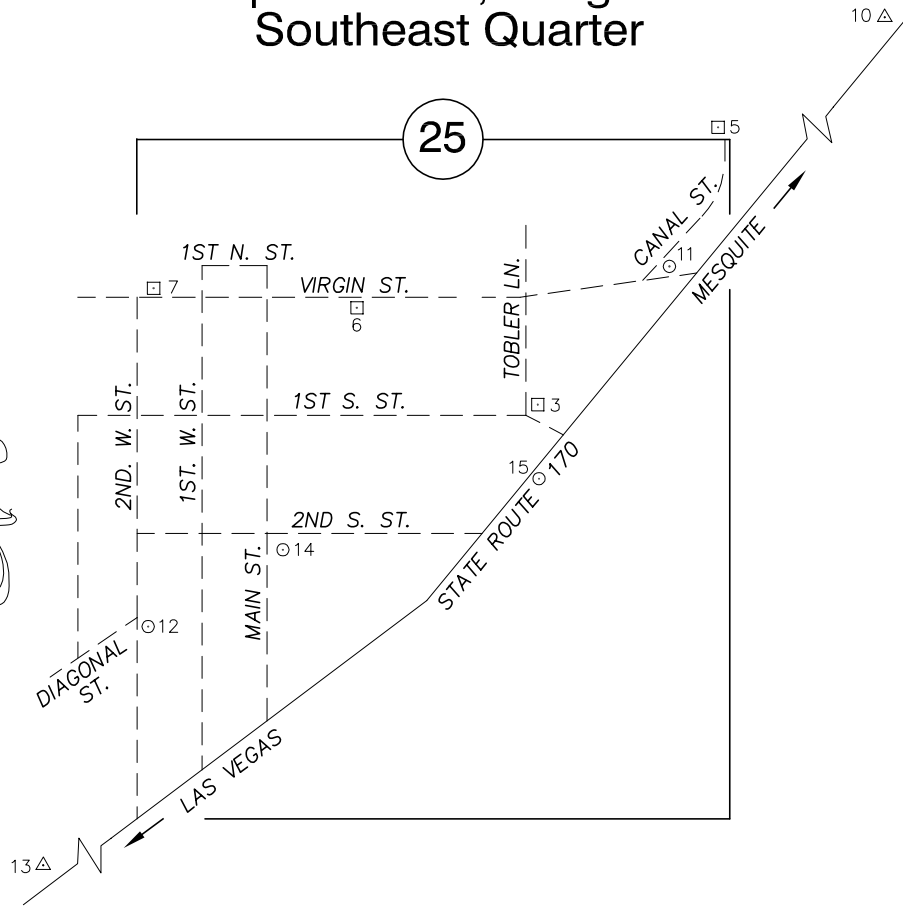


Township 13 South, Range 70 East Southeast Quarter



NORTH AMERICAN VERTICAL
DATUM OF 1988
- ALL ELEVATIONS IN METERS -

No.	STATION	ELEVATION (METERS)	DESCRIPTION
1			LOST 2003
2			LOST 2003
3	7C30 25S6	473.002	F N D 2" BRASS CAP REFERENCE MONUMENT IN NORTH TOP OF HEADWALL, NORTHEAST CORNER OF 1ST SOUTH ST. AND TOBLER LN. ABOUT 3' BELOW ROADWAY.
4			LOST 2003
5	7C30 25E4	472.752	F N D RIVET AND SQUARE ALUMINUM PLATE, IN NORTH EDGE OF IRRIGATION CANAL 25' EAST OF THE EAST EDGE OF CANAL ST. 7' NORTH OF 8" PIPE CROSSING CANAL AND 840' NORTHEAST OF THE PI OF VIRGIN ST. & CANAL ST.
6	7C30 25W6	467.686	F N D RIVET AND SQUARE ALUMINUM PLATE, IN THE TOP WEST END OF A 1' CONCRETE RETAINING WALL, SOUTH SIDE OF VIRGIN ST. 370' EAST OF MAIN ST.
7	7C30 25W4	465.596	F N D RIVET AND SQUARE ALUMINUM PLATE IN THE SOUTHWEST CORNER OF FOUNDATION FOR A GYMNASIUM BUILDING NORTH OF VIRGIN ST. BETWEEN 1ST WEST ST. AND 2ND WEST ST.
8			LOST 2003
9			LOST 2003
10	C 406 1982	477.785	F N D USC&GS STAINLESS STEEL ROD. BM C-406, 1.3 MILES NORTHEAST OF BUNKERVILLE ALONG STATE HIGHWAY 170, 290' SOUTHWEST OF MILE MARKER 10, 60' NORTH OF HIGHWAY CENTERLINE, NEAR PP # (BV 52/7)
11	0C30 25E6 2000	472.737	S E T RIVET AND ROUND ALUMINUM PLATE IN A CONCRETE HEADWALL OF AN IRRIGATION DITCH, NORTHEAST CORNER VIRGIN ST. AND CANAL ST.

CLARK COUNTY VERTICAL CONTROL v.2003

CLARK COUNTY SURVEYOR'S OFFICE
5051 SOUTH PARADISE ROAD
LAS VEGAS, NEVADA 89119
(702) 455-0640

CONVERSION FACTOR:
METERS X $\left(\frac{3937}{1200}\right)$ = U.S. SURVEY FEET

REVISED 2003	SHEET 1 OF 2	13-70 SE
--------------	-----------------	-------------

No.	STATION	ELEVATION (METERS)		DESCRIPTION	No.	STATION	ELEVATION (METERS)		DESCRIPTION
12	OC30 25SWS 2000	467.123	S E T	RIVET AND ROUND ALUMINUM PLATE IN A CONCRETE BASE OF A FIRE HYDRANT, SOUTHEAST CORNER OF 2ND WEST ST. AND DIAGONAL ST.	25				
13	M 51 1934	467.047	F N D	3 3/4" BRASS CAP IN CONCRETE, SOUTHWEST 0.65 MI. FROM HIGHWAY 170 AND MAIN ST. 0.1 MI. SOUTHWEST OF MILE MARKER 8, 78' NORTHWEST OF CENTERLINE, 41' NORTHEAST OF THE N.E. CORNER OF A CONCRETE WALL.	26				
14	OC30 25SW6 2000	472.353	S E T	RIVET AND ROUND ALUMINUM PLATE IN A CONCRETE FIRE HYDRANT BASE, SOUTHEAST CORNER OF MAIN ST. AND 2ND SOUTH ST.	27				
15	OC30 25S4 2000	474.385	S E T	RIVET AND ROUND ALUMINUM PLATE IN A CONCRETE HEADWALL OF AN OUTLET STRUCTURE, 45' SOUTHEAST OF CENTERLINE HIGHWAY 170 AND 160' SOUTHWEST OF MILE MARKER #9, (450' SOUTH OF TOBLER LN.)	28				
16					29				
17					30				
18					31				
19					32				
20					33				
21					34				
22					35				
23					CLARK COUNTY VERTICAL CONTROL v.2003				
24					CLARK COUNTY SURVEYOR'S OFFICE 5051 SOUTH PARADISE ROAD LAS VEGAS, NEVADA 89119 (702) 455-0640			CONVERSION FACTOR: METERS X $\left(\frac{3937}{1200}\right)$ = U.S. SURVEY FEET	
					REVISED 2003	SHEET 2 OF 2	13-70 SE		