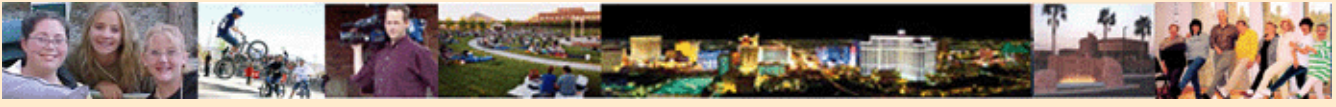




# Public Communications

Clark County, NV > County Services > Public Communications > News Releases



## NEWS RELEASE

Public Communications • 500 S. Grand Central Parkway, 6th floor • Las Vegas, Nevada 89155

**FOR IMMEDIATE RELEASE**  
**10/22/2008**

Contact: Erik Pappa  
Phone: (702) 455-3548  
E-Mail: [epappa@co.clark.nv.us](mailto:epappa@co.clark.nv.us)

## Clark County 100 in 2009, Announces Plans

Clark County will mark its 100<sup>th</sup> birthday in 2009 with a year-long series of events, exhibits, programs and publications, officials announced today.

The centennial year will kick off with the opening of a year-long exhibit at the Clark County Museum in Henderson, culminate with the opening of a historic wedding chapel and a 1910 railroad cottage, and include the nomination of the Welcome to Las Vegas sign to the National Historic Register, the opening of an Old Spanish Trail Park, monthly history panel discussions to be aired live on local television, dedications of historic markers, burial of a time capsule, a history-themed “geocaching” project and more.

“Often, when communities celebrate milestones like this one, they do so in grand fashion,” said Commission Chairman Rory Reid. “Here, we wanted to create a meaningful celebration. Clark County’s centennial won’t be a party so much as it will be an historic experience, one that gives our

citizens a sense of the place they live in. And one that leaves a legacy. This year-long series of events, exhibits, programs, publications and videos will inform and entertain both residents and visitors.”

Commission Vice Chairman Chip Maxfield agreed: “This history is part of our shared heritage, and we hope during Clark County’s centennial celebration, more people will learn about the people, places and events that make up our community’s story. It helps give us a sense of who we are, a sense of belonging and a feeling of pride to know about where we came from.”

A major event in late fall will be the grand opening of the newly restored Candlelight Wedding Chapel on Heritage Street at the Clark County Museum. Located for many years just north of the Riviera, the Candlelight was one of the last free-standing wedding chapels on the Las Vegas Strip and hosted the weddings of celebrities such as Bette Midler, Tony Curtis, Whoopi Goldberg, Mickey Rooney, Michael Caine, Patti Duke, Barry White and Clayton Moore.

Another major event will be the opening of the only publicly accessible railroad cottage in Southern Nevada. The 1910 cottage, which will open at the Clark County Museum, is historically significant because such cottages were built in downtown Las Vegas by the railroad to house workers. Las Vegas served as an important stop for the railroad and it was the railroad that auctioned off the lots that would become downtown Las Vegas. In fact, Clark County is named for railroad baron William Andrews Clark.

“We have a real treasure at the Clark County Museum and these historic additions provide a meaningful and lasting legacy for all of Southern Nevada,” said Commissioner Bruce Woodbury, who represents that part of Henderson where the museum is located. “My hope is that people from all over the county will discover for themselves how much fun it is to step back in time on the Museum’s Heritage Street, and get a real feel for what life was like in the old days.”

On First Friday, July 3, 2009, a touring history exhibit focusing on rural Clark County will open at the Clark County Government Center Rotunda before traveling to various locations throughout the year. Entertainment, children's activities and refreshments will precede a roundtable discussion featuring Las Vegas pioneers sharing their experiences. The public will be invited to attend and participate in the roundtable, which will be aired live on Clark County Television (CCTV) Channel 4 and over the Internet at [www.accessclarkcounty.com](http://www.accessclarkcounty.com). Similar discussions will be held on every first Friday in 2009 starting Feb. 6 at 6 p.m.

“I’m happy to be part of a celebration that focuses on history and reaches out to all our residents from all our diverse communities,” said Commissioner Weekly, noting that he has experience with such celebrations, citing his involvement with the 2005 city centennial. “Not that we don’t want visitors to learn about Clark County and be part of some of our planned activities, but we really want the people who live here to get acquainted, or re-acquainted, with this place they call home.”

Smaller events throughout urban and rural Clark County will showcase the county’s mining, ranching, farming, military and tourism heritage.

“Clark County is a great place to live, with a great history, and in 2009 we get a chance to tell people about it and do some bragging,” said Commissioner Tom Collins. “Clark County is lucky to have the Las Vegas Strip but it has a lot more to offer, for instance, in the northern part of the county, the Moapa Valley communities, an area I represent along with Commissioner Woodbury. These places were settled by hard-working farmers long before there was a Clark County. In fact some of these communities began in the 1860s, before they were even part of the state of Nevada. We want people to know about all of Clark County. There are a lot of great stories of the people that made Clark County what it is today, and I’m proud to be part of the Centennial year and the activities we have planned to tell some of these stories.”

Commissioner Chris Giunchigliani agreed, adding, “Clark County history gives us an anchor in our fast-paced, changing world. We can and should remember that it’s our history and celebrate it, which will make our lives richer in the process.”

Other activities include two book-length publications and smaller brochures, history programs produced for CCTV, placement of historic markers around the county, a centennial-themed geo-caching project, essay and poster contests coordinated with the Clark County School District and new county centennial web pages at [www.accessclarkcounty.com/100](http://www.accessclarkcounty.com/100) with information, resources, historic trivia contests and a place to submit your historical thoughts and experiences. Residents also may add themselves to an electronic mailing list to stay abreast of centennial updates.

Additionally, a time capsule will be buried at the Government Center for re-opening in the future.

The county also has nominated the “Welcome to Las Vegas” sign to the National Historic Register. The Las Vegas Strip is in unincorporated Clark County and not in any city.

In a pre-centennial event, the county will celebrate on Nov. 15 the opening of Old Spanish Trail Park, located on the famous route at Cimarron Road and Tara Avenue. “The Spanish Trail played an important role in North America’s development and residents will be able to get a glimpse of that route and what it meant for our area,” said Maxfield, in whose district the Old West-themed, nontraditional park is situated.

“We hope our centennial celebration will enrich the lives of all our residents, young and old, and provide some fun along the way,” said Commissioner Susan Brager. At the county, we’re acknowledging the event by putting a golden sheen on our logo and adopting a slogan to be used through 2009. The words are: a century of service. These words represent service by Clark County government to its citizens, and we are rededicating ourselves to improved customer service. It represents the service provided by the community to the tourists who frequent the Las Vegas Strip and beyond. It represents our citizens, who serve one another. And it represents service to our planet, through measures we all can take to live environmentally sound lives.”

Clark County was formed on July 1, 1909, out of what had been Lincoln County. The city of Las Vegas, which includes downtown and the area north of the Las Vegas Strip, would be formed two years later in 1911.

###

Clark County is a dynamic and innovative organization dedicated to providing top-quality service with integrity, respect and accountability. With jurisdiction over the world-famous Las Vegas Strip and covering an area the size of New Jersey, Clark is the nation’s 15<sup>th</sup>-largest county and provides extensive regional services to more than 2 million citizens and 44 million visitors a year. Included are the nation’s 7<sup>th</sup>-busiest airport, air quality compliance, social services and the state’s largest public hospital, University Medical Center. The county also provides municipal services that are traditionally provided by cities to almost 900,000 residents in the unincorporated area. Those include fire protection, roads and other public works, parks and recreation, and planning and development. In 2009, Clark County celebrates a “century of service.”