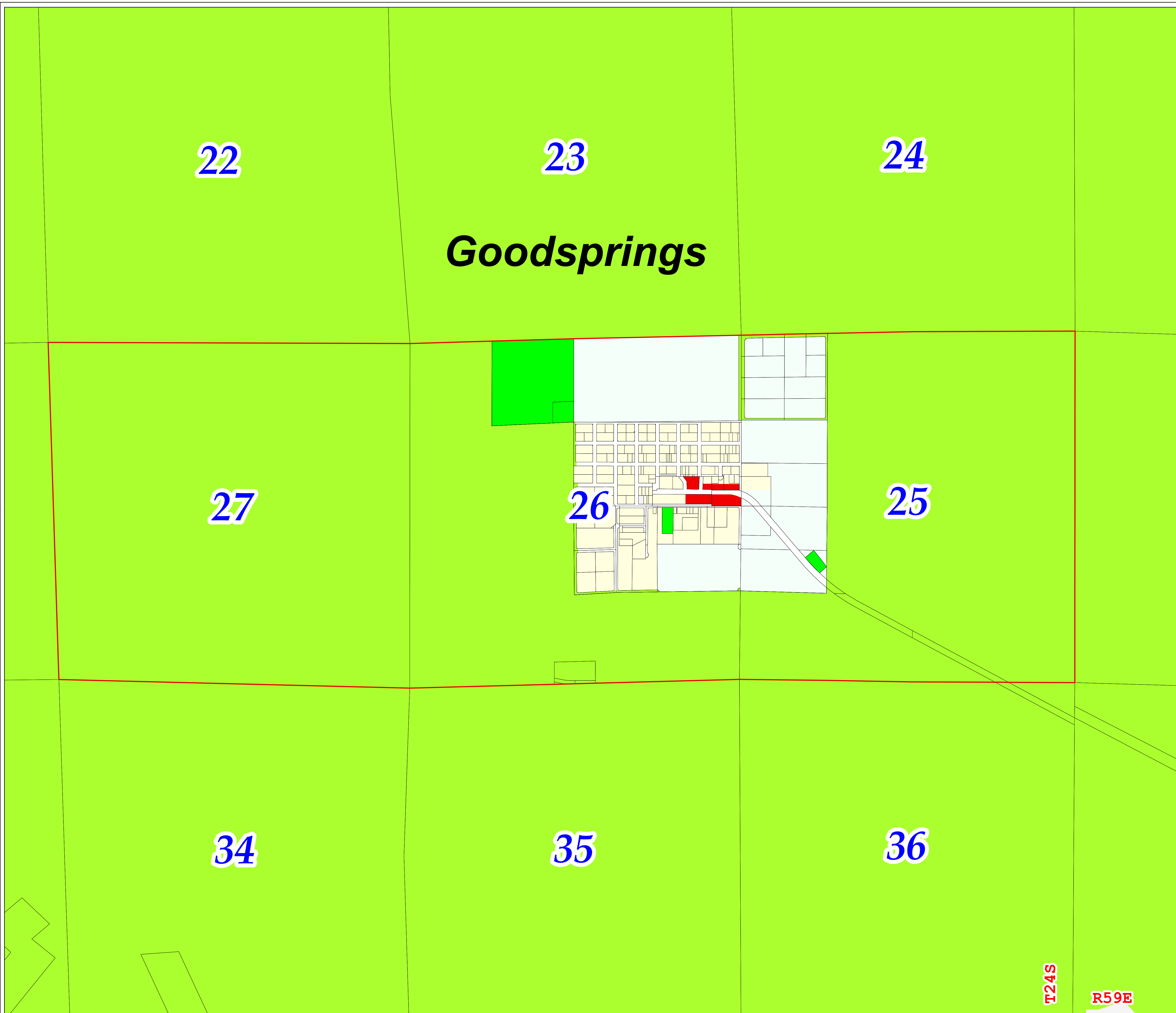


Comprehensive Planning
South County Planning Area
Planned Land Use
Goodsprings Detail Area
Adopted June 19, 2013

Goodsprings



- | | |
|--|---|
| Open Lands | Residential High Rise Center Greater than 32 du/1 ac |
| Residential Rural Up to 0.5 du/1 ac | Office Professional |
| Residential Agricultural Up to 1 du/1 ac | Commercial Neighborhood |
| Rural Neighborhood Preservation Up to 2 du/1 ac | Commercial General |
| Rural Neighborhood Up to 2 du/1 ac | Commercial Tourist |
| Residential Low Up to 3.5 du/1 ac | Business and Design Research Park |
| Residential Suburban Up to 8 du/1 ac | Industrial |
| Residential Medium Up to 3 du/1 ac to 14 du/1 ac | Heavy Industrial |
| Residential High Up to 8 du/1 ac to 18 du/1 ac | Public Facilities |
| Residential Urban Center Up to 18 du/1 ac to 32 du/1 ac | Institutional |
| Cooperative Management Area | Major Development Projects |
| Community Districts | Planning Area Boundary |
| Airport Arrival RPZ | Incorporated Cities |
| Airport Arrival and Departure RPZ | Tribal Lands |
| Airport Departure RPZ | Noise Environments AE-60 |
| Military Facilities | Noise Environments AE-65 |
| | Noise Environments AE-70 |
| | Noise Environments AE-75 |

- | | |
|-------------------------|-----------------------------|
| CCSD = School District | L = Library |
| E = Elementary | P = Park |
| M = Middle | W = Place of Worship |
| H = High | SS = Electrical Sub-Station |
| G = Government Facility | PW = Public Works |
| GC = Golf Course | WD = Water District |
| F = Fire Station | U = Utility |

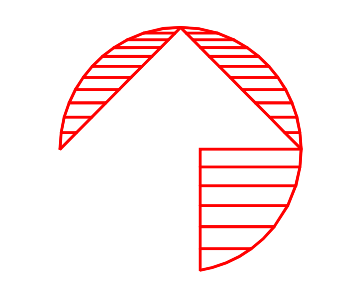
Maps are available for overall South County and these detail Areas:

Cal-Nev-Ari, Eldorado Valley, Goodsprings, Jean, Nelson,
 Palm Gardens, Primm, Sandy Valley, Searchlight, Sloan

For detailed Land Use information, see Adopted Land Use Plans.



This information is for display purposes only.
 No liability is assumed as to the accuracy of the data delineated hereon.
 Categories denoted in the legend may not apply to a particular Planning Area.



T24S

R59E