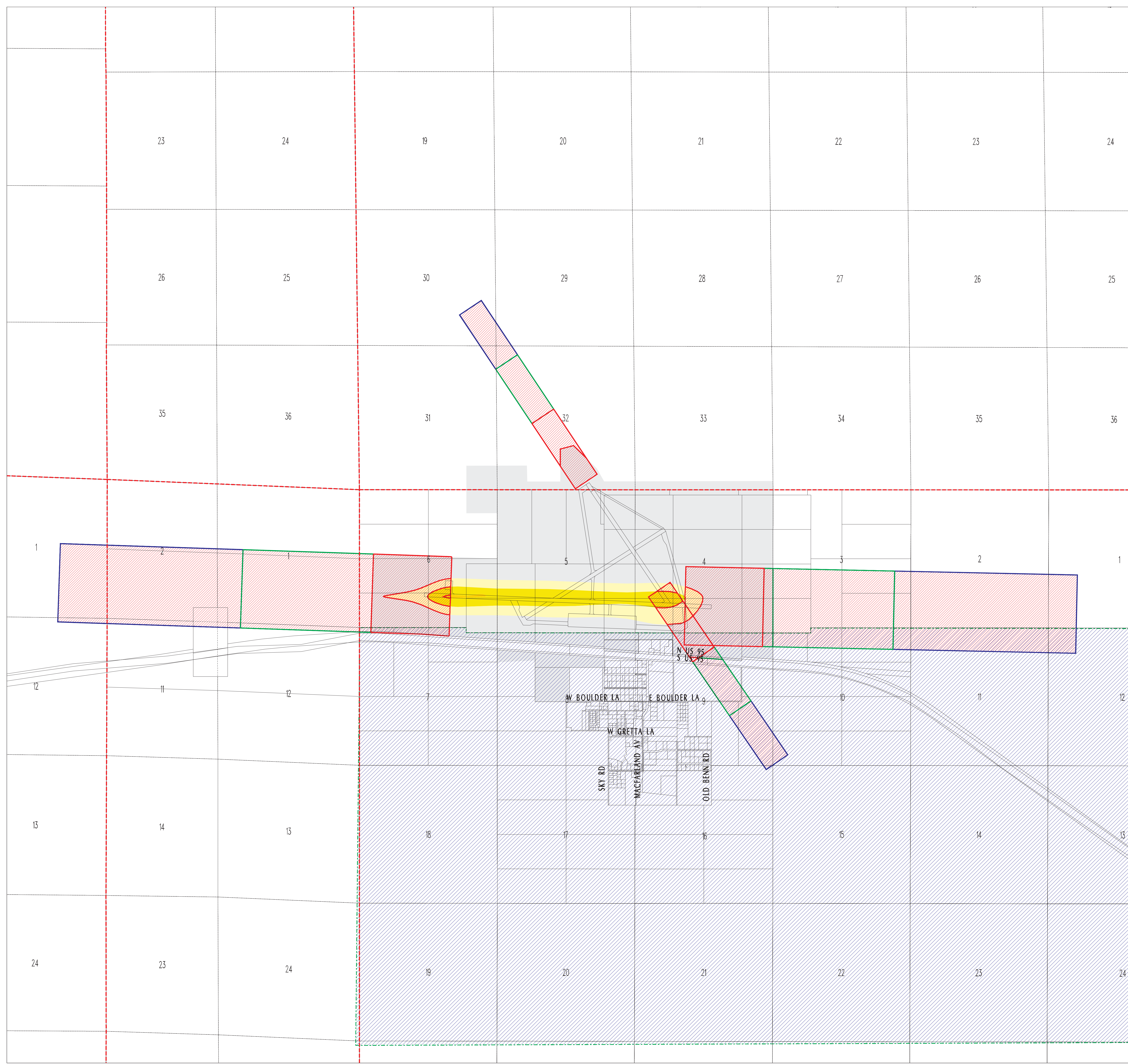


CREECH AFB

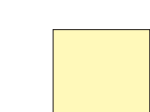


AIRPORT ENVIRONS



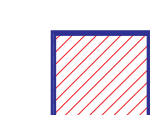


CORPORATE ENTITIES

-  AIRPORT PROPERTY
-  UNINCORPORATED CLARK COUNTY
-  INDIAN SPRINGS

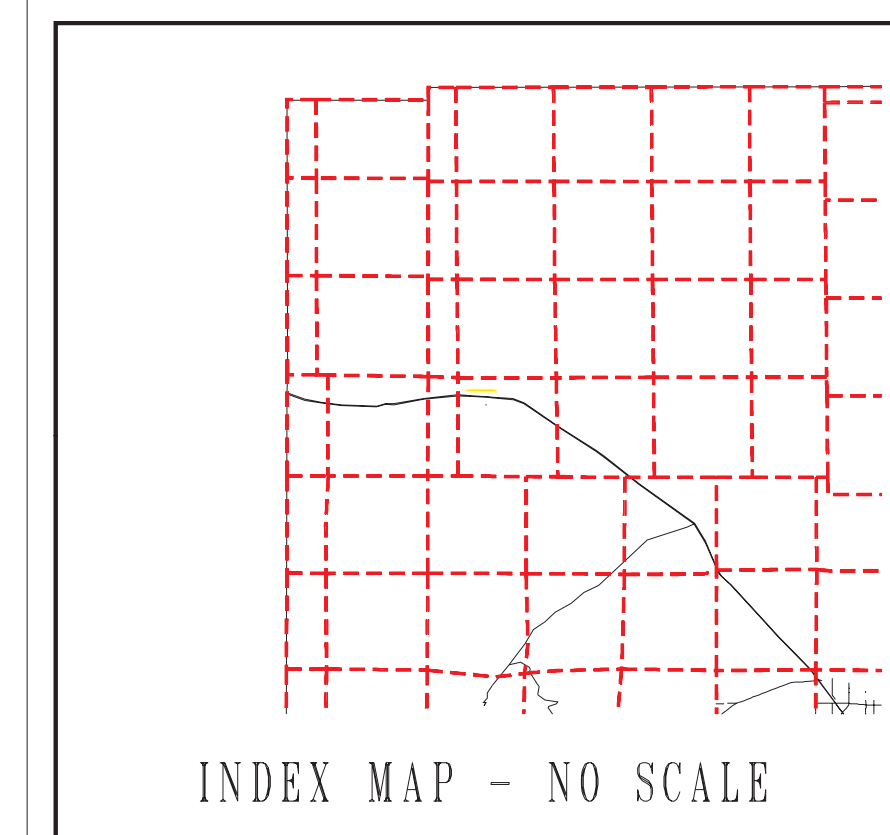
NOISE SUBZONES

-  AE-65
-  AE-70
-  AE-75

ACCIDENT POTENTIAL SUBZONES

-  APZ-2
-  APZ-1
-  AE-RPZ

-  ASSESSOR'S BOOK BOUNDARIES



PLOT CREATED ON:
June 28, 2005



THESE MAPS SHOULD ONLY BE USED FOR DISPLAY AND GENERAL INFORMATION PURPOSES. THE OFFICIAL ADOPTED NOISE CONTOUR MAPS, LOCATED IN THE CURRENT PLANNING DIVISION (AND THE COUNTY CLERK'S OFFICE) WILL BE USED BY THE CURRENT PLANNING STAFF TO MAKE THE FINAL NOISE LEVEL DETERMINATION AT THE TIME OF ACTUAL SUBMITTAL FOR A BUILDING PERMIT. THE INFORMATION ON THESE MAPS REPRESENT THE ADOPTED NOISE CONTOURS IN THE INDIAN SPRINGS AREA. THERE IS A POSSIBILITY THAT A NEW OFFICIAL MAP WITH DIFFERENT CONTOURS WILL BE ADOPTED AS A RESULT OF NEW NOISE STUDIES BASED ON MORE RECENT AIRPORT DEVELOPMENT AND OPERATIONS.
Effective March 6, 2004

THIS INFORMATION IS FOR DISPLAY PURPOSES ONLY. NO LIABILITY IS ASSUMED AS TO THE ACCURACY OF THE DATA DELINEATED HEREON.