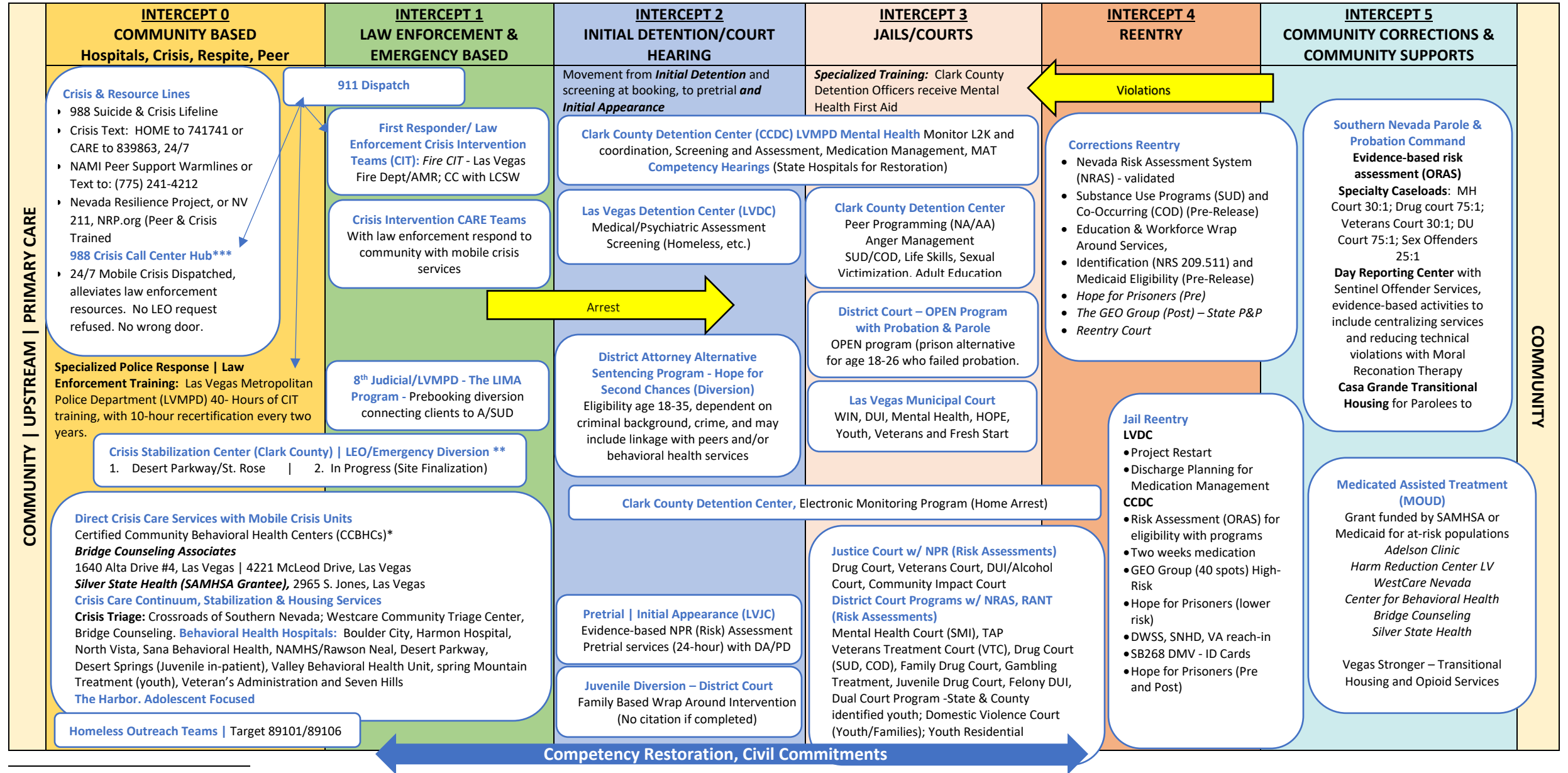


Clark County Criminal Justice Coordinating Council, Sequential Intercept Model¹



¹ Approved October 31, 2022.

No data collection system for those across agencies with SMI/COD or tracking. CMIS/HMIS tracks services with community-based agencies (homeless organizations) or block grant, not accessible to all.

GAPS & Partner Organization Details

<p>INTERCEPT 0 COMMUNITY BASED Hospitals, Crisis, Respite, Peer</p>	<p>INTERCEPT 1 LAW ENFORCEMENT & EMERGENCY BASED</p>	<p>INTERCEPT 2 INITIAL DETENTION/COURT HEARING</p>	<p>INTERCEPT 3 JAILS/COURTS</p>	<p>INTERCEPT 4 REENTRY</p>	<p>INTERCEPT 5 COMMUNITY CORRECTIONS & COMMUNITY SUPPORTS</p>	<p style="writing-mode: vertical-rl; transform: rotate(180deg);">COMMUNITY</p>
<p>*Certified Community Behavioral Health Center must provide crisis mental health services, screening, assessment, diagnosis, patient-centered treatment planning, outpatient mental health and substance use services, targeted case management, peer support, counseling, family support services and psychiatric rehabilitation services. (Medicaid PPS Model, No insurance, Medicaid, or Under Insured). This includes crisis teams and Assisted Outpatient Treatment (AOT). GAP: Need Engagement for 24/7 Mobile Crisis Teams, and Capacity</p> <p>** Crisis Stabilization Implementation funded. Sustainability through Medicaid and community partnerships. GAP: Timeline for fully operational; Location of Henderson site to the Strip/Downtown area</p> <p>***RFP being released, funding Secured for Central Crisis Call Center Hub for 24/7 Mobile Crisis Dispatch through partner organizations.</p> <p>CMIS/HMIS – Clarity System for service review including tribal affiliations, services provided as part of the continuum of care, client records, database of service providers and direct services.</p> <p>Community Services Block Grant – Economic Opportunity Board, funding to assist with rent, utilities, and addressing poverty at the community level.</p> <p>OpenBeds.com – Behavioral Health Electronic Referral Network, Nevada Health Connection. Bed registry services to support providers and placement and wrap around services.</p> <p>The Harbor – Wrap around services focused on youth/adolescents</p>	<p>911 Dispatch GAP: Identify behavioral health crisis situations and pass along to 988 to launch mobile crisis or Crisis Intervention Teams</p> <p>With 988, 911 dispatchers should be able to focus on life saving calls with support and comfort calls diverted to crisis counselors.</p> <p>CRT Las Vegas Fire Department Team is focused on one high-need neighborhood. Need to expand model. CRT officers can conduct follow-up with persons who abuse the L2K system or who are at high risk. They will also coordinate with the Homeless Outreach Team (HOT) to identify up to 40 people who are high utilizers/familiar faces.</p> <p>Project LIMA, capacity up to 100 (rolling) individuals, with potential to go higher.</p>	<p>Juvenile diversion program. Intervention, family, with citation on hold to complete the program. Capacity up to 100 plus (rolling).</p> <p>Hope for Second Chances - DA Diversion Program for 18-35 years old. Risk and Program assessment with case manager, peers/mentors, and regular workshops. Program is 12-18 months for those with two or few felonies – not more than one violent felony. Could include inpatient or outpatient services.</p>	<p>Justice Court: Misdemeanors Only for drug court, DUI/Alcohol Court</p> <ul style="list-style-type: none"> • Drug Court: Up to 100 participants, depending on cases, four phases, over 18-months • Veterans Court: 34 participants, 12-months • DUI/Alcohol: 60-80 participants, 12-months • Community Impact Court: Las Vegas Strip repeat offenders (homeless), serves 250 – 50 in court in person, mobile unit for basic needs <p>District Courts:</p> <ul style="list-style-type: none"> • MH Court: Misdemeanors, felonies, 150 Capacity (rolling); 18-36 months • Veterans Treatment: Up to 80 served, • Veteran Justice Organization (VA Peer/System Navigator) 18-month program. Eligibility Determination. • Drug Court: 400 rolling capacity, misdemeanors and felonies, four phases, 18 months • Transitional Age Program (TAP) 18 – 25.5 years of age, SUD/COD, Capacity of 60 (rolling) – five phases, 18-month • Family Treatment Court – SUD or COD, Capacity up 200, 100% voluntary (not court ordered) • Co-Occurring Disorders Court (CODC), capacity up to 100 participants, case management. Four phase, 18-months, misdemeanor & felony • OPEN Capacity up to 50 enrolled. Males & Females 18-26, MRT (Behavioral Health & EBP) High level P&P Supervision • Gambling Court up to 25, statute driven (behavioral health) • Juvenile Drug Court (ages 11-18). Capacity up to 100. • Detention Alternative for Autistic Youth. Fast track to assessment & diagnosis. DRC, Respite, Wrap-Around 	<ul style="list-style-type: none"> • Case Management, Expand for those with SMI/COD with CCBHC or SAMHSA provider • Expand Medication Access, currently two-weeks. Challenge with short term release and medication supplies • Transitional Planning, linking with CCBHC or SAMHSA providers • CCSD has daily request for discharge (200/day) – workload for screening and assessment • WestCare manages Project Restart • GEO Group – 40 slots • Reentry Court (184 parolees) 	<ul style="list-style-type: none"> • MOUD/Reentry – Must be SUD/COD diagnosis, with primary of opiate or Methamphetamine. Not education. Parolee or Inmate. Capacity up to 100. • MOUD/Reentry Education, parolee, the 184 program for early release (Inmate, who could be through intensive supervision). Capacity up to 100. 	

				<ul style="list-style-type: none">• Felony DUI Court (3 felonies within 7 years) 3–5-year program, capacity up to 300 (rolling). Statute, self-funded.• Las Vegas Municipal Court:<ul style="list-style-type: none">Women in Need (WIN) – female offenders with history of trauma, SUD, prostitution)DUI Court – 52 week programMental Health Court – 18-24 month program, minimal violent historyHabitual Offender (HOPE Court) Chronic misdemeanor offendersYouth Offender – 18 – 25, SUDVeterans CourtFresh Start – designed to assist defendants with stable housing, income and promote self-sufficiency			
--	--	--	--	--	--	--	--